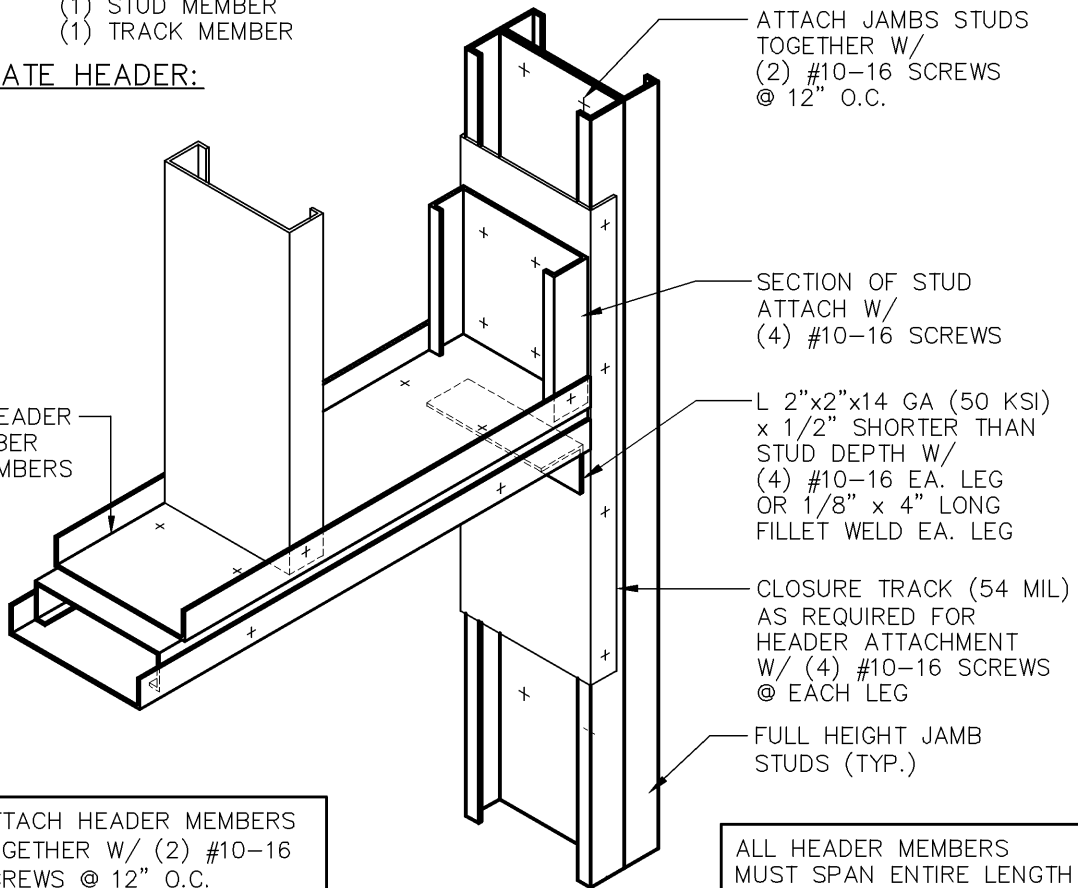


STEEL STUD HEADER
 (1) STUD MEMBER
 (1) TRACK MEMBER

ALTERNATE HEADER:

STEEL STUD HEADER
 (1) STUD MEMBER
 (2) TRACK MEMBERS



ATTACH JAMBS STUDS TOGETHER W/
 (2) #10-16 SCREWS @ 12" O.C.

SECTION OF STUD ATTACH W/
 (4) #10-16 SCREWS

L 2"x2"x14 GA (50 KSI) x 1/2" SHORTER THAN STUD DEPTH W/
 (4) #10-16 EA. LEG OR 1/8" x 4" LONG FILLET WELD EA. LEG

CLOSURE TRACK (54 MIL) AS REQUIRED FOR HEADER ATTACHMENT W/
 (4) #10-16 SCREWS @ EACH LEG

FULL HEIGHT JAMB STUDS (TYP.)

ATTACH HEADER MEMBERS TOGETHER W/
 (2) #10-16 SCREWS @ 12" O.C.

ALL HEADER MEMBERS MUST SPAN ENTIRE LENGTH OF OPENING W/O SPLICES



BUILDSTRONG

6272 CENTER STREET
 MENTOR, OHIO 44060
 PHONE: 440-974-3370

DETAIL IS FOR REFERENCE ONLY.
 NOT FOR CONSTRUCTION.

DETAIL PROVIDED BY:



100 CAMELOT DRIVE
 FOND DU LAC, WI 54935
 PHONE: (920) 926-9800

FLATWISE HEADER – JAMB DETAIL