



Design No. U408

BXUV.U408

Fire Resistance Ratings - ANSI/UL 263

[Page Bottom](#)

Design/System/Construction/Assembly Usage Disclaimer

- Authorities Having Jurisdiction should be consulted in all cases as to the particular requirements covering the installation and use of UL Certified products, equipment, system, devices, and materials.
- Authorities Having Jurisdiction should be consulted before construction.
- Fire resistance assemblies and products are developed by the design submitter and have been investigated by UL for compliance with applicable requirements. The published information cannot always address every construction nuance encountered in the field.
- When field issues arise, it is recommended the first contact for assistance be the technical service staff provided by the product manufacturer noted for the design. Users of fire resistance assemblies are advised to consult the general Guide Information for each product category and each group of assemblies. The Guide Information includes specifics concerning alternate materials and alternate methods of construction.
- Only products which bear UL's Mark are considered Certified.

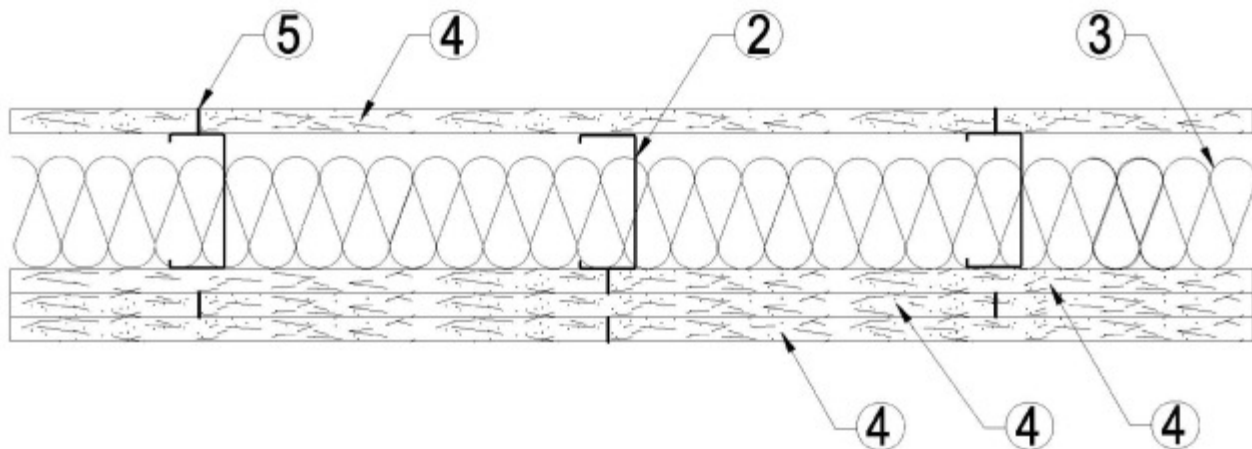
Fire-resistance Ratings - ANSI/UL 263

[See General Information for Fire-resistance Ratings - ANSI/UL 263](#)

Design No. U408

February 19, 2013

Nonbearing Wall Rating — 2 Hr



1. **Floor and Ceiling Runners** — (Not Shown) - Channel shaped, 3-1/2 in. (min) deep, with min 1-1/4 in. long legs, fabricated from min 25 MSG corrosion-protected steel, attached to floor and ceiling with fasteners 24 in. OC max.

1A. **Framing Members* - Floor and Ceiling Runner** — Not shown - In lieu of Item 1 — For use with Item 2A, proprietary channel shaped runners, 1-1/4 in. deep by min 3-1/2 in. wide fabricated from min 0.020 in. thick galv steel, attached to floor and ceiling with fasteners spaced 24 in. OC max.

CALIFORNIA EXPANDED METAL PRODUCTS CO — Viper20™ Track

MARINO/WARE, DIV OF WARE INDUSTRIES INC — Viper20™ Track

PHILLIPS MFG CO L L C — Viper20™ Track

1B. Framing Members*— Floor and Ceiling Runners — Not shown - In lieu of Item 1 — For use with Item 2B, channel shaped runners, 1-1/4 in. deep by min 3-1/2 in. wide fabricated from min 0.018 in. thick galv steel, attached to floor and ceiling with fasteners spaced 24 in. OC max.

CLARKDIETRICH BUILDING SYSTEMS — CD ProTRAK

DMFCWBS L L C — ProTRAK

MBA BUILDING SUPPLIES — ProTRAK

RAM SALES L L C — Ram ProTRAK

SOUTHEASTERN STUD & COMPONENTS INC — ProTRAK

STEEL STRUCTURAL SYSTEMS L L C — Tri-S ProTRAK

1C. Framing Members* - Floor and Ceiling Runner — Not shown - In lieu of Item 1 — For use with Item 2C, proprietary channel shaped runners, 1-1/4 in. deep by min 3-1/2 in. wide fabricated from min 0.020 in. thick galv steel, attached to floor and ceiling with fasteners spaced 24 in. OC max.

TELLING INDUSTRIES L L C — Viper20™ Track

1D. Framing Members*— Floor and Ceiling Runners — Not shown - In lieu of Item 1 — For use with Item 2D, channel shaped runners, 1-1/4 in. deep by min 3-1/2 in. wide fabricated from min 0.018 in. thick galv steel, attached to floor and ceiling with fasteners spaced 24 in. OC max.

TELLING INDUSTRIES L L C — TRUE-TRACK™

2. Steel Studs — Channel shaped, min 3-1/2 in. deep, 1-1/4 in. flanges and 3/16 in. returns, fabricated from min 25 MSG corrosion-protected steel, spaced a max of 24 in. OC. Studs to be cut 5/8 in. less than assembly height and friction-fit in place.

2A. Framing Members* - Steel Studs — Not shown - In lieu of Item 2 — For use with Item 1A, proprietary channel shaped steel studs, 1-1/4 in. deep by min 3-1/2 in. wide fabricated from min 0.020 in. thick galv steel. Studs cut 5/8 in. less in length than assembly height.

CALIFORNIA EXPANDED METAL PRODUCTS CO — Viper20™

MARINO/WARE, DIV OF WARE INDUSTRIES INC — Viper20™

PHILLIPS MFG CO L L C — Viper20™

2B. Framing Members*— Steel Studs — Not shown - In lieu of Item 2 — For use with Item 1B, channel shaped steel studs, min 3-1/2 in. wide fabricated from min 0.018 in. thick galv steel, spaced a max of 24 in. OC. Studs cut 5/8 in. less in length than assembly height.

CLARKDIETRICH BUILDING SYSTEMS — CD ProSTUD

DMFCWBS L L C — ProSTUD

MBA BUILDING SUPPLIES — ProSTUD

RAM SALES L L C — Ram ProSTUD

SOUTHEASTERN STUD & COMPONENTS INC — ProSTUD

STEEL STRUCTURAL SYSTEMS L L C — Tri-S ProSTUD

2C. **Framing Members* - Steel Studs** — Not shown - In lieu of Item 2 — For use with Item 1C, proprietary channel shaped steel studs, 1-1/4 in. deep by min 3-1/2 in. wide fabricated from min 0.020 in. thick galv steel. Studs cut 5/8 in. less in length than assembly height.

TELLING INDUSTRIES L L C — Viper20™

2D. **Framing Members*— Steel Studs** — Not shown - In lieu of Item 2 — For use with Item 1D, channel shaped steel studs, min 3-1/2 in. wide fabricated from min 0.018 in. thick galv steel, spaced a max of 24 in. OC. Studs cut 5/8 in. less in length than assembly height.

TELLING INDUSTRIES L L C — TRUE-STUD™

3. **Batts and Blankets*** — (Optional) Placed in stud cavities, any glass fiber or mineral wool insulation bearing the UL Classification Marking as to Surface Burning Characteristics and/or Fire Resistance.

See **Batts and Blankets** (BKNV or BZJZ) Categories for names of Classified companies.

4. **Gypsum Board*** — Gypsum panels with beveled, square or tapered edges. Base layer applied vertically or horizontally on both sides of the studs, with vertical joints centered over studs and staggered one stud cavity on opposite sides of studs. Horizontal edge joints (when applied horizontally) and horizontal butt joints (when applied vertically) on opposite sides of studs need not be staggered or backed. Base layer panels attached to studs with 1 in. long Type S crews spaced 8 in. OC when applied horizontally, or 8 in. OC along the vertical edges and 12 in. OC in the field when applied vertically. Remaining two layers applied vertically or horizontally on one side of the wall. Horizontal butt joints staggered a min of 6 in. on adjacent layers. First of these two layers attached to studs with 1-5/8 in. long Type S screws spaced 12 in. OC. Face layer attached to studs with 2-3/8 in. Type S screws spaced 8 in. OC when applied horizontally, or 8 in. OC along the vertical edges and 12 in. OC in the field when applied vertically. When used in widths other than 48 in., gypsum panels to be installed horizontally.

CGC INC — 5/8 in. thick Type AR, C, IP-AR, IP-X1, IP-X2, IPC-AR, SCX, SHX, WRX or WRC.

UNITED STATES GYPSUM CO — 5/8 in. thick Type AR, C, FRX-G, IP-AR, IP-X1, IP-X2, IPC-AR, SCX, SGX, SHX, WRX, WRC, USGX (Joint tape and compound, Item 5, optional for use with Type USGX).

USG MEXICO S A DE C V — 5/8 in. thick Type AR, C, IP-AR, IP-X1, IP-X2, IPC-AR, SCX, SHX, WRX, WRC.

4A. **Gypsum Board*** — (As an alternate to Item 4, not for use with Items 1B and 2B) - Nom 5/8 in. thick gypsum panels with beveled, square or tapered edges installed as described in Item 4.

CGC INC — Type ULX

UNITED STATES GYPSUM CO — Type ULX.

USG MEXICO S A DE C V — Type ULX

5. **Joint Tape and Compound** — Vinyl or casein, dry or premixed joint compound applied in two coats to joints and screw heads of outer layers. Paper tape, nom 2 in. wide, embedded in first layer of compound over

all joints of outer layer panels. When square-edge gypsum board is used, treatment of joints is optional.

6. **Caulking and Sealants*** — (Optional, not shown) - A bead of acoustical sealant applied around the partition perimeter for sound control.

UNITED STATES GYPSUM CO — Type AS

*Bearing the UL Classification Mark

[Last Updated](#) on 2013-02-19

[Questions?](#)

[Print this page](#)

[Terms of Use](#)

[Page Top](#)

© 2013 UL LLC

When the UL Leaf Mark is on the product, or when the word "Environment" is included in the UL Mark, please search the [UL Environment database](#) for additional information regarding this product's certification.

The appearance of a company's name or product in this database does not in itself assure that products so identified have been manufactured under UL's Follow-Up Service. Only those products bearing the UL Mark should be considered to be Certified and covered under UL's Follow-Up Service. Always look for the Mark on the product.

UL permits the reproduction of the material contained in the Online Certification Directory subject to the following conditions: 1. The Guide Information, Assemblies, Constructions, Designs, Systems, and/or Certifications (files) must be presented in their entirety and in a non-misleading manner, without any manipulation of the data (or drawings). 2. The statement "Reprinted from the Online Certifications Directory with permission from UL" must appear adjacent to the extracted material. In addition, the reprinted material must include a copyright notice in the following format: "© 2013 UL LLC".