



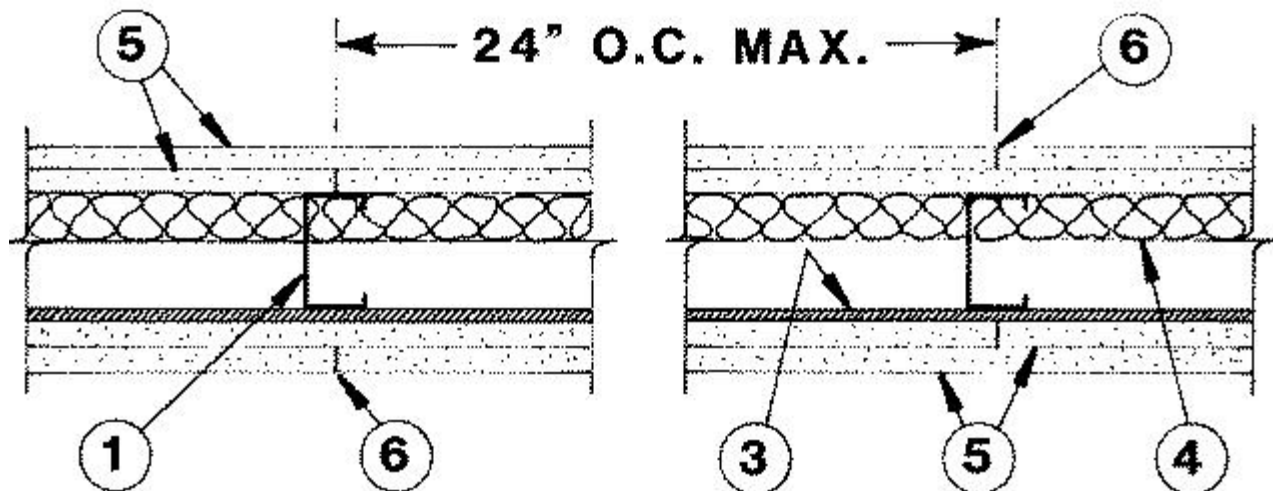
Design No. U454
BXUV.U454
Fire Resistance Ratings - ANSI/UL 263

[Page Bottom](#)**Design/System/Construction/Assembly Usage Disclaimer**

- Authorities Having Jurisdiction should be consulted in all cases as to the particular requirements covering the installation and use of UL Certified products, equipment, system, devices, and materials.
- Authorities Having Jurisdiction should be consulted before construction.
- Fire resistance assemblies and products are developed by the design submitter and have been investigated by UL for compliance with applicable requirements. The published information cannot always address every construction nuance encountered in the field.
- When field issues arise, it is recommended the first contact for assistance be the technical service staff provided by the product manufacturer noted for the design. Users of fire resistance assemblies are advised to consult the general Guide Information for each product category and each group of assemblies. The Guide Information includes specifics concerning alternate materials and alternate methods of construction.
- Only products which bear UL's Mark are considered Certified.

Fire-resistance Ratings - ANSI/UL 263[See General Information for Fire-resistance Ratings - ANSI/UL 263](#)**Design No. U454**

June 06, 2013

Nonbearing Wall Rating — 2 HR.**HORIZONTAL SECTION**

1. **Studs** — Channel-shaped min 2-1/2 in. wide by 1-1/4 in. deep with 5/16 in. folded back return flange legs. Fabricated from No. 25 MSG galv steel. Max stud spacing 24 in. OC. Studs to be cut 1 in. less than assembly height.

1A. **Framing Members* - Steel Studs** — Not shown - In lieu of Item 1 — For use with Item 2A, proprietary channel shaped steel studs, 1-1/4 in. deep by min 2-1/2 in. wide fabricated from min 0.020 in. thick galv steel. Studs cut 1 in. less in length than assembly height. Max stud spacing 24 in. OC.

CALIFORNIA EXPANDED METAL PRODUCTS CO — Viper20™

MARINO/WARE, DIV OF WARE INDUSTRIES INC — Viper20™

PHILLIPS MFG CO L L C — Viper20™

1B. Framing Members*— Steel Studs — Not shown - In lieu of Item 1 — For use with Item 2B, channel shaped steel studs, 1-1/4 in. deep by min 2-1/2 in. wide fabricated from min 0.018 in. thick galv steel. Studs cut 1 in. less in length than assembly height. Max stud spacing 24 in. OC.

CLARKDIETRICH BUILDING SYSTEMS — CD ProSTUD

DMFCWBS L L C — ProSTUD

MBA BUILDING SUPPLIES — ProSTUD

RAM SALES L L C — Ram ProSTUD

SOUTHEASTERN STUD & COMPONENTS INC — ProSTUD

STEEL STRUCTURAL SYSTEMS L L C — Tri-S ProSTUD

1C. Framing Members* - Steel Studs — Not shown - In lieu of Item 1 — For use with Item 2C, proprietary channel shaped steel studs, 1-1/4 in. deep by min 2-1/2 in. wide fabricated from min 0.020 in. thick galv steel. Studs cut 1 in. less in length than assembly height. Max stud spacing 24 in. OC.

TELLING INDUSTRIES L L C — Viper20™

1D. Framing Members*— Steel Studs — Not shown - In lieu of Item 1 — For use with Item 2D, channel shaped steel studs, 1-1/4 in. deep by min 2-1/2 in. wide fabricated from min 0.018 in. thick galv steel. Studs cut 1 in. less in length than assembly height. Max stud spacing 24 in. OC.

TELLING INDUSTRIES L L C — TRUE-STUD™

1E. Framing Members* -Steel Studs — Not shown-In lieu of item 1-For use with item 2E- proprietary channel shaped steel studs, min 2-1/2 in. wide by 1-1/4 in. deep. Fabricated from No. 25 MSG galv steel. Max stud spacing 24 in. OC. Studs to be cut 1 in. less than assembly height.

KIRII (HONG KONG) LTD — Type KIRII

2. Floor and Ceiling Runners (Not Shown) — Channel-shaped runners, 2-1/2 in. wide by 1-1/4 in. deep, fabricated from No. 25 MSG galv steel. Attached to floor and ceiling with fasteners, 24 in. OC, max.

2A. Framing Members - Floor and Ceiling Runner* — Not shown - In lieu of Item 2 — For use with Item 1A, proprietary channel shaped runners, 1-1/4 in. deep by min 2-1/2 in. wide fabricated from min 0.020 in. thick galv steel, attached to floor and ceiling with fasteners spaced 24 in. OC max.

CALIFORNIA EXPANDED METAL PRODUCTS CO — Viper20™ Track

MARINO/WARE, DIV OF WARE INDUSTRIES INC — Viper20™ Track

PHILLIPS MFG CO L L C — Viper20™ Track

2B. Framing Members*— Floor and Ceiling Runners — Not shown - In lieu of Item 2 — For use with Item 1B, channel shaped runners, 1-1/4 in. deep by min 2-1/2 in. wide fabricated from min 0.018 in. thick galv steel, attached to floor and ceiling with fasteners spaced 24 in. OC max.

CLARKDIETRICH BUILDING SYSTEMS — CD ProTRAK

DMFCWBS L L C — ProTRAK

MBA BUILDING SUPPLIES — ProTRAK

RAM SALES L L C — Ram ProTRAK

SOUTHEASTERN STUD & COMPONENTS INC — ProTRAK

STEEL STRUCTURAL SYSTEMS L L C — Tri-S ProTRAK

2C. Framing Members - Floor and Ceiling Runner* — Not shown - In lieu of Item 2 — For use with Item 1C, proprietary channel shaped runners, 1-1/4 in. deep by min 2-1/2 in. wide fabricated from min 0.020 in. thick galv steel, attached to floor and ceiling with fasteners spaced 24 in. OC max.

TELLING INDUSTRIES L L C — Viper20™ Track

2D. Framing Members*— Floor and Ceiling Runners — Not shown - In lieu of Item 2 — For use with Item 1D, channel shaped runners, 1-1/4 in. deep by min 2-1/2 in. wide fabricated from min 0.018 in. thick galv steel, attached to floor and ceiling with fasteners spaced 24 in. OC max.

TELLING INDUSTRIES L L C — TRUE-TRACK™

2E. Framing Members* -Floor and Ceiling Runners — Not shown - In lieu of Item 2 - For use with Item 1E - proprietary channel shaped runners, 2-1/2 in. wide by 1-1/4 in. deep, fabricated from No. 25 MSG galv steel. Attached to floor and ceiling with fasteners, 24 in. OC, max.

KIRII (HONG KONG) LTD — Type KIRII

3. Furring Channel — Resilient 25 MSG galv steel furring channels spaced vertically max 24 in. OC, flange portion attached to each intersecting stud with 1/2 in. long type S-12 pan head steel screws.

4. Batts and Blankets* — Min 1 in. thick mineral wool attached to base layer of gypsum board which is directly attached to steel studs. Fasten each batt with min 9/16 in. long staples. Use five staples for each 4 ft long piece. Drive one staple in the center of each piece and a staple at each corner, approx 3 in. from edges.

IIG MINWOOL L L C — Type SAFB

THERMAFIBER INC — Type SAFB.

5. Gypsum Board — 1/2 in. thick, 4 ft wide. Attached to furring channels, base layer with 1 in. type S steel screws spaced 24 in. OC, face layer with 1-5/8 in. Type S screws spaced 12 in. OC. Gypsum board on direct attached side, base layer attached with 1 in. long type S-12 steel screws 24 in. OC, face layer attached with 1-5/8 in. type S-12 steel screws spaced 12 in. OC. Gypsum board joints oriented vertically, located over studs and offset between layers.

AMERICAN GYPSUM CO — Types AG-C.

CERTAINTED GYPSUM INC — Type C.

CERTAINTED GYPSUM CANADA INC — Type C.

CGC INC — Type C, IP-X2, IPC-AR or WRC.

GEORGIA-PACIFIC GYPSUM L L C — Types 5, DAPC.

LAFARGE NORTH AMERICA INC — Type LGFC-C, LGFC-C/A .

NATIONAL GYPSUM CO — Types FSK-C, FSW-C, FSMR-C.

PABCO BUILDING PRODUCTS L L C, DBA PABCO GYPSUM — Type PG-C.

PANEL REY S A — Type PRC

TEMPLE-INLAND — Type TG-C.

THAI GYPSUM PRODUCTS PCL — Type C.

UNITED STATES GYPSUM CO — Type C, IP-X2, IPC-AR or WRC.

USG MEXICO S A DE C V — Type C, IP-X2, IPC-AR or WRC.

5A. **Gypsum Board*** — (As an alternate to Item 5) — 5/8 in. thick, 4 ft wide. Attached to furring channels and steel studs as described in Item 5.

CGC INC — Type AR, IP-AR or SCX.

NATIONAL GYPSUM CO — Type FR or FSMR-C.

UNITED STATES GYPSUM CO — Type AR, IP-AR or SCX.

USG MEXICO S A DE C V — Type AR, IP-AR or SCX.

5B. **Gypsum Board*** — (As an alternate to Item 5) — Nom 3/4 in. thick, 4 ft wide, installed as described in Item 5 with screw length increased to 1-1/4 in. for base layer and 2-1/4 in. for face layer.

CGC INC — Types AR, IP-AR.

UNITED STATES GYPSUM CO — Types AR, IP-AR.

USG MEXICO S A DE C V — Types AR, IP-AR.

5C. **Gypsum Board*** — (As an alternate to Item 5A, not for use with Items 1B and 2B) - Nom. 5/8 in. thick, 4 ft. wide gypsum panels with beveled, square or tapered edges installed as described in Item 5A.

CGC INC — Type ULX

UNITED STATES GYPSUM CO — Type ULX

USG MEXICO S A DE C V — Type ULX

6. **Joint Tape and Compound** — Vinyl, dry or premixed joint compound, applied to joints and screw heads; paper tape, 2 in. wide, embedded in first layer of compound over all joints. As an alternate, nom 3/32 in. thick gypsum veneer plaster may be applied to the entire surface of Classified veneer baseboard. Joints reinforced.

7. **Caulking and Sealants*** — (Optional, not shown) — A bead of acoustical sealant applied around the partition perimeter for sound control.

ITW POLYMERS SEALANTS NORTH AMERICA INC — Type SCS-200

UNITED STATES GYPSUM CO — Type AS.

*Bearing the UL Classification Mark

[Last Updated](#) on 2013-06-06

[Questions?](#)

[Print this page](#)

[Terms of Use](#)

[Page Top](#)

© 2013 UL LLC

When the UL Leaf Mark is on the product, or when the word "Environment" is included in the UL Mark, please search the [UL Environment database](#) for additional information regarding this product's certification.

The appearance of a company's name or product in this database does not in itself assure that products so identified have been manufactured under UL's Follow-Up Service. Only those products bearing the UL Mark should be considered to be Certified and covered under UL's Follow-Up Service. Always look for the Mark on the product.

UL permits the reproduction of the material contained in the Online Certification Directory subject to the following conditions: 1. The Guide Information, Assemblies, Constructions, Designs, Systems, and/or Certifications (files) must be presented in their entirety and in a non-misleading manner, without any manipulation of the data (or drawings). 2. The statement "Reprinted from the Online Certifications Directory with permission from UL" must appear adjacent to the extracted material. In addition, the reprinted material must include a copyright notice in the following format: "© 2013 UL LLC".