



## Design No. U466

### BXUV.U466

### Fire-resistance Ratings - ANSI/UL 263

[Page Bottom](#)

#### Design/System/Construction/Assembly Usage Disclaimer

- Authorities Having Jurisdiction should be consulted in all cases as to the particular requirements covering the installation and use of UL Certified products, equipment, system, devices, and materials.
- Authorities Having Jurisdiction should be consulted before construction.
- Fire resistance assemblies and products are developed by the design submitter and have been investigated by UL for compliance with applicable requirements. The published information cannot always address every construction nuance encountered in the field.
- When field issues arise, it is recommended the first contact for assistance be the technical service staff provided by the product manufacturer noted for the design. Users of fire resistance assemblies are advised to consult the general Guide Information for each product category and each group of assemblies. The Guide Information includes specifics concerning alternate materials and alternate methods of construction.
- Only products which bear UL's Mark are considered Certified.

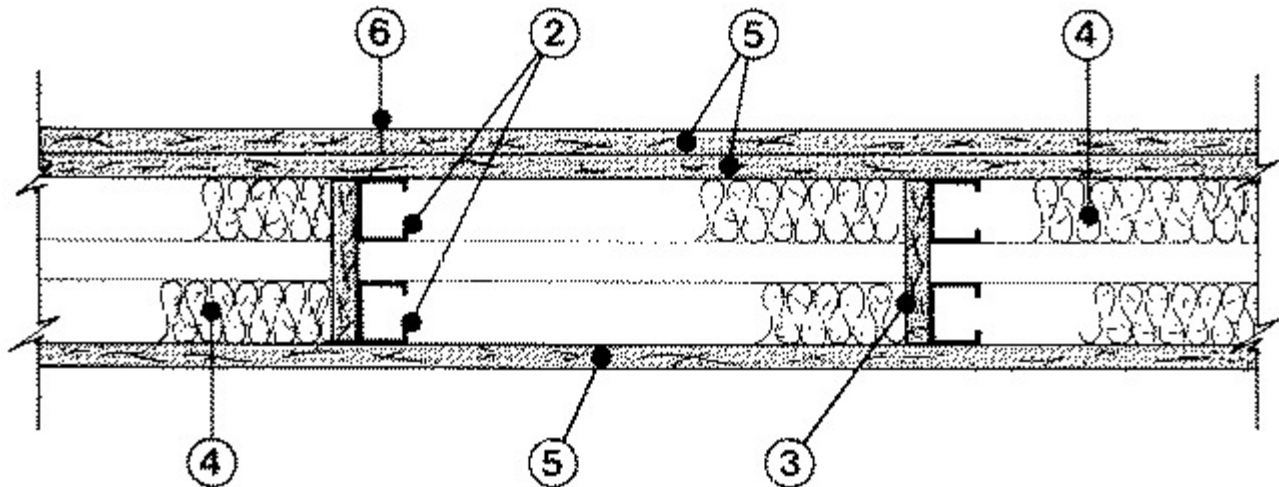
#### Fire-resistance Ratings - ANSI/UL 263

[See General Information for Fire-resistance Ratings - ANSI/UL 263](#)

## Design No. U466

June 06, 2013

Nonbearing Wall Rating — 1 HR.



1. **Floor and Ceiling Runner** — (Not Shown) — Channel-shaped runners, min 1-5/8 in. wide by 1 in. deep fabricated from 25 MSG galv steel. Attached to floor and ceiling with fasteners, 24 in. OC, max.

1A. **Framing Members\* - Floor and Ceiling Runner** — Not shown - In lieu of Item 1 — For use with Item 2A, proprietary channel shaped runners, 1-1/4 in. deep by min 1-5/8 in. wide fabricated from min 0.020 in. thick galv steel, attached to floor and ceiling with fasteners spaced 24 in. OC max.

**CALIFORNIA EXPANDED METAL PRODUCTS CO** — Viper20™ Track

**MARINO/WARE, DIV OF WARE INDUSTRIES INC** — Viper20™ Track

**PHILLIPS MFG CO L L C** — Viper20™ Track

**1B. Framing Members\*— Floor and Ceiling Runners** — Not shown - In lieu of Item 1 — For use with Item 2B, channel shaped runners, 1-1/4 in. deep by min 1-5/8 in. wide fabricated from min 0.018 in. thick galv steel, attached to floor and ceiling with fasteners spaced max 24 in. OC.

**CLARKDIETRICH BUILDING SYSTEMS** — CD ProTRAK

**DMFCWBS L L C** — ProTRAK

**MBA BUILDING SUPPLIES** — ProTRAK

**RAM SALES L L C** — Ram ProTRAK

**SOUTHEASTERN STUD & COMPONENTS INC** — ProTRAK

**STEEL STRUCTURAL SYSTEMS L L C** — Tri-S ProTRAK

**1C. Framing Members\* - Floor and Ceiling Runner** — Not shown - In lieu of Item 1 — For use with Item 2C, proprietary channel shaped runners, 1-1/4 in. deep by min 1-5/8 in. wide fabricated from min 0.020 in. thick galv steel, attached to floor and ceiling with fasteners spaced 24 in. OC max.

**TELLING INDUSTRIES L L C** — Viper20™ Track

**1D. Framing Members\*— Floor and Ceiling Runners** — Not shown - In lieu of Item 1 — For use with Item 2D, channel shaped runners, 1-1/4 in. deep by min 1-5/8 in. wide fabricated from min 0.018 in. thick galv steel, attached to floor and ceiling with fasteners spaced max 24 in. OC.

**TELLING INDUSTRIES L L C** — TRUE-TRACK™

**2. Studs** — Channel-shaped, 1-5/8 in. wide by 1-1/4 in. deep with 1/4 in. folded back return flange legs. Fabricated from 25 MSG galv steel. Max stud spacing 24 in. OC.

**2A. Framing Members\* - Steel Studs** — Not shown - In lieu of Item 2 — For use with Item 1A, proprietary channel shaped steel studs, 1-1/4 in. deep by min 1-5/8 in. wide fabricated from min 0.020 in. thick galv steel. Studs 3/8 in. less in lengths than assembly heights. Max stud spacing 24 in. OC.

**CALIFORNIA EXPANDED METAL PRODUCTS CO** — Viper20™

**MARINO/WARE, DIV OF WARE INDUSTRIES INC** — Viper20™

**PHILLIPS MFG CO L L C** — Viper20™

**2B. Framing Members\*— Steel Studs** — As an alternate to Item 2 - For use with Item 1B, channel shaped studs, min 2-1/2 in. wide fabricated from min 0.018 in. thick galv steel, spaced a max of 24 in. OC. Studs to be cut 1/2 in. less than assembly height.

**CLARKDIETRICH BUILDING SYSTEMS** — CD ProSTUD

**DMFCWBS L L C** — ProSTUD

**MBA BUILDING SUPPLIES — ProSTUD**

**RAM SALES L L C — Ram ProSTUD**

**SOUTHEASTERN STUD & COMPONENTS INC — ProSTUD**

**STEEL STRUCTURAL SYSTEMS L L C — Tri-S ProSTUD**

2C. **Framing Members\* - Steel Studs** — Not shown - In lieu of Item 2 — For use with Item 1C, proprietary channel shaped steel studs, 1-1/4 in. deep by min 1-5/8 in. wide fabricated from min 0.020 in. thick galv steel. Studs 3/8 in. less in lengths than assembly heights. Max stud spacing 24 in. OC.

**TELLING INDUSTRIES L L C — Viper20™**

2D. **Framing Members\*— Steel Studs** — As an alternate to Item 2 - For use with Item 1D, channel shaped studs, min 2-1/2 in. wide fabricated from min 0.018 in. thick galv steel, spaced a max of 24 in. OC. Studs to be cut 1/2 in. less than assembly height.

**TELLING INDUSTRIES L L C — TRUE-STUD™**

3. **Bracing** — Two Types — Cut from steel runners or studs, cavity width. Fastened with two 1/2 in. long, Type S steel screws in each stud, space braces max 48 in. OC. As an alternate bracing cut from gypsum board, length equal to stud cavity width and 6 in. wide. Fasten with two 1 in. long, Type S steel screws (1-1/4 in. long if Item 5A is used) in each stud, space braces max 48 in. OC.

4. **Batts and Blankets\*** — (Optional) Mineral wool or glass fiber batts, partially or completely filling stud cavity.

See **Batts and Blankets** (BZJZ) category for names of manufacturers.

4A. **Fiber, Sprayed\*** — As an alternate to Batts and Blankets (Item 4) — (100% Borate Formulation) — Spray applied cellulose material. The fiber is applied with water to completely fill the enclosed cavity in accordance with the application instructions supplied with the product with a nominal dry density of 2.7 lb/ft<sup>3</sup>. Alternate Application Method: The fiber is applied without water or adhesive at a nominal dry density of 3.5 lb/ft<sup>3</sup>, in accordance with the application instructions supplied with the product.

**U S GREENFIBER L L C** — INS735 & INS745 for use with wet or dry application. INS765LD and INS770LD are to be used for dry application only.

4B. **Fiber, Sprayed\*** — As an alternate to Batts and Blankets (Item 4) and Item 4A - Spray applied cellulose insulation material. The fiber is applied with water to interior surfaces in accordance with the application instructions supplied with the product. Applied to completely fill the enclosed cavity. Minimum dry density of 4.3 pounds per cubic ft.

**NU-WOOL CO INC — Cellulose Insulation**

4C. **Fiber, Sprayed\*** — As an alternate to Batts and Blankets (Item 4) - Spray applied cellulose fiber. The fiber is applied with water to completely fill the enclosed cavity in accordance with the application instructions supplied with the product. The minimum dry density shall be 4.30 lbs/ft<sup>3</sup>.

**INTERNATIONAL CELLULOSE CORP — Celbar-RL**

5. **Gypsum Board\*** — 5/8 in. thick. Screw attached on single layer side with 1 in. long, Type S steel screws spaced 12 in. OC. Gypsum board on double layer side, base layer attached with 1 in. long, Type S steel screws spaced 24 in. OC, face layer attached with 1-5/8 in. long, Type S steel screws spaced 12 in. OC. Gypsum board joints oriented vertical or horizontal, with or without offset. Butt joints located over studs.

**ACADIA DRYWALL SUPPLIES LTD — Type X**

**AMERICAN GYPSUM CO** — Types AGX-1, M-Glass, AG-C.

**BEIJING NEW BUILDING MATERIALS PUBLIC LTD CO** — Type DBX-1.

**CGC INC** — Types AR, C, IP-AR, IP-X1, IP-X2, IPC-AR, SCX, SHX, WRC or WRX.

**CERTAINTED GYPSUM INC** — Types EGRG, GlasRoc, or Type C.

**CERTAINTED GYPSUM CANADA INC** — Type C.

**GEORGIA-PACIFIC GYPSUM L L C** — Types 5, C, DAPC.

**LAFARGE NORTH AMERICA INC** — Types LGFC-C, LGFC-C/A, LGFC6, LGFC6A, LGLLX.

**NATIONAL GYPSUM CO** — Types FSK, FSK-C, FSW, FSW-5, FSW-6, FSL or FSW-C.

**PABCO BUILDING PRODUCTS L L C, DBA PABCO GYPSUM** — Type C, PG-11, PG-C, PGS-WRS.

**PANEL REY S A** — Types GREX, PRX, RHX, MDX, ETX.

**SIAM GYPSUM INDUSTRY (SARABURI) CO LTD** — Type EX-1

**TEMPLE-INLAND** — Type TG-C, Type X, Veneer Plaster Base-Type X, Water Rated-Type X, Sheathing Type-X, Soffit-Type X, GreenGlass Type X.

**THAI GYPSUM PRODUCTS PCL** — Type C.

**UNITED STATES GYPSUM CO** — Type AR, C, FRX-G, IP-AR, IP-X1, IP-X2, IPC-AR, SCX, SHX, WRC, WRX, USGX (Joint tape and compound, Item 6, optional for use with Type USGX)

**USG MEXICO S A DE C V** — Type AR, C, IP-AR, IP-X1, IP-X2, IPC-AR, SCX, SHX, WRC or WRX.

5A. **Gypsum Board\*** — (As an alternate to Item 5) — Nom 3/4 in. thick, installed as described in Item 5 with screw length increased to 1-1/4 in. for base layer and 2-1/4 in. for face layer.

**CGC INC** — Types AR, IP-AR

**UNITED STATES GYPSUM CO** — Types AR, IP-AR.

**USG MEXICO S A DE C V** — Types AR, IP-AR.

5B. **Gypsum Board\*** — (As an alternate to Items 5 and 5A) - 5/8 in. thick, 2 ft wide, tongue and groove edge, applied horizontally to one side of the assembly (as the outer layer on the two layer side). Secured as described in Item 5. Joint covering (Item 6) not required.

**CGC INC** — Type SHX.

**UNITED STATES GYPSUM CO** — Type SHX.

**USG MEXICO S A DE C V** — Type SHX.

5C. **Gypsum Board\*** — (As an alternate to Items 5 through 5B) - Fastened as described in Item 5. 5/8 in. thick, 4 ft. wide, paper surfaced, applied vertically only.

**NATIONAL GYPSUM CO** — SoundBreak XP Type X Gypsum Board

**TEMPLE-INLAND** — Type X ComfortGuard Sound Deadening Gypsum Board

5D. **Wall and Partition Facings and Accessories\*** — (As an alternate to Items 5 through 5C) — Nominal 5/8 in. thick, 4 ft wide panels, applied vertically only and secured as described in Item 5.

**SERIOUS ENERGY INC** — Type QuietRock ES, Type QuietRock QR-527.

5E. **Gypsum Board\*** — (As an alternate to Items 5 through 5D) - Fastened as described in Item 5. 5/8 in. thick, 4 ft. wide, paper surfaced, applied vertically only.

**CERTAINTED GYPSUM INC** — Type SilentFX

5F. **Gypsum Board\*** — (As an alternate to Item 5, not for use with Items 1B and 2B) - Nom. 5/8 in. thick gypsum panels with beveled, square or tapered edges installed as described in Item 5.

**CGC INC** — Type ULX

**UNITED STATES GYPSUM CO** — Type ULX

**USG MEXICO S A DE C V** — Type ULX

5G. **Gypsum Board\*** — (As an alternate to Item 5) — 5/8 in. thick, 4 ft. wide, applied vertically with vertical joints centered over studs and staggered one stud cavity on opposite sides of studs. Secured as described in Item 5.

**CERTAINTED GYPSUM INC** — 5/8" Easi-Lite Type X

**CERTAINTED GYPSUM CANADA INC** — 5/8" Easi-Lite Type X

**THAI GYPSUM PRODUCTS PCL** — Type X

6. **Joint Tape and Compound** — Vinyl, dry or premixed joint compound, applied in two coats to joints and screw heads; paper tape, 2 in. wide, embedded in first layer of compound over all joints. As an alternate, nominal 3/32 in. thick gypsum veneer plaster may be applied to the entire surface of classified veneer base board. Joints reinforced.

7. **Caulking and Sealants\*** — (Optional, not shown) — A bead of acoustical sealant applied around the partition perimeter for sound control.

**ITW POLYMERS SEALANTS NORTH AMERICA INC** — Type SCS-200

**UNITED STATES GYPSUM CO — Type AS.**

\*Bearing the UL Classification Mark

[Last Updated](#) on 2013-06-06

[Questions?](#)

[Print this page](#)

[Terms of Use](#)

[Page Top](#)

© 2013 UL LLC

When the UL Leaf Mark is on the product, or when the word "Environment" is included in the UL Mark, please search the [UL Environment database](#) for additional information regarding this product's certification.

The appearance of a company's name or product in this database does not in itself assure that products so identified have been manufactured under UL's Follow-Up Service. Only those products bearing the UL Mark should be considered to be Certified and covered under UL's Follow-Up Service. Always look for the Mark on the product.

UL permits the reproduction of the material contained in the Online Certification Directory subject to the following conditions: 1. The Guide Information, Assemblies, Constructions, Designs, Systems, and/or Certifications (files) must be presented in their entirety and in a non-misleading manner, without any manipulation of the data (or drawings). 2. The statement "Reprinted from the Online Certifications Directory with permission from UL" must appear adjacent to the extracted material. In addition, the reprinted material must include a copyright notice in the following format: "© 2013 UL LLC".