



Design No. U471

BXUV.U471

Fire-resistance Ratings - ANSI/UL 263

[Page Bottom](#)

Design/System/Construction/Assembly Usage Disclaimer

- Authorities Having Jurisdiction should be consulted in all cases as to the particular requirements covering the installation and use of UL Certified products, equipment, system, devices, and materials.
- Authorities Having Jurisdiction should be consulted before construction.
- Fire resistance assemblies and products are developed by the design submitter and have been investigated by UL for compliance with applicable requirements. The published information cannot always address every construction nuance encountered in the field.
- When field issues arise, it is recommended the first contact for assistance be the technical service staff provided by the product manufacturer noted for the design. Users of fire resistance assemblies are advised to consult the general Guide Information for each product category and each group of assemblies. The Guide Information includes specifics concerning alternate materials and alternate methods of construction.
- Only products which bear UL's Mark are considered Certified.

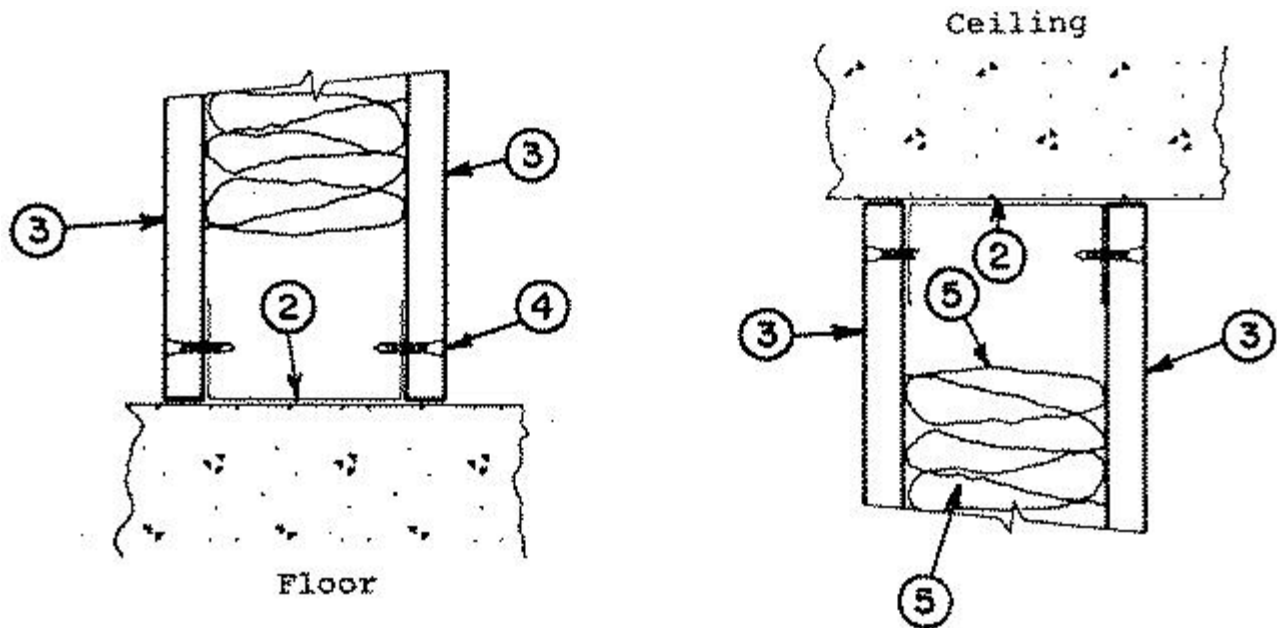
Fire-resistance Ratings - ANSI/UL 263

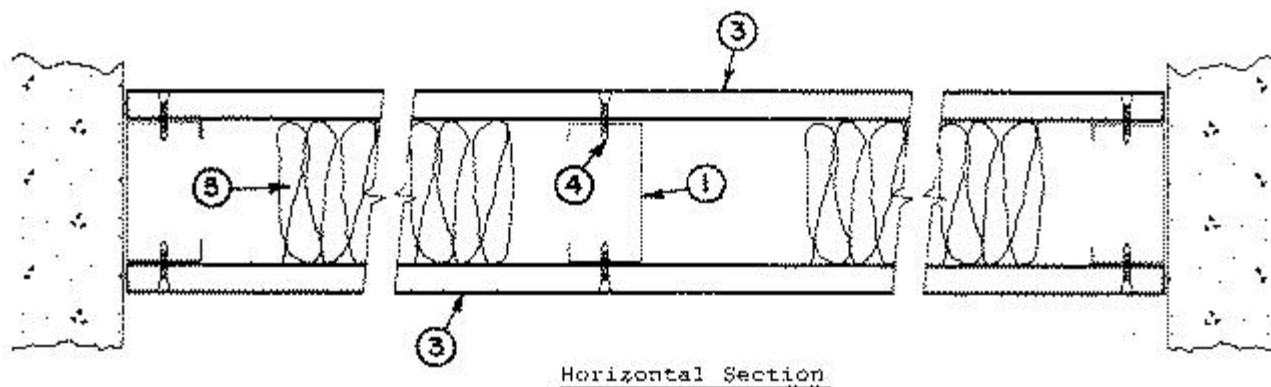
[See General Information for Fire-resistance Ratings - ANSI/UL 263](#)

Design No. U471

April 09, 2013

Nonbearing Wall Rating — 1-1/2 HR.





1. **Studs** — Channel-shaped, min 3-5/8 in. wide with 1-1/4 in. flanges and 3/8 in. lips. Fabricated from No. 25 MSG galv steel. Max stud spacing is 24 in. OC. Stud length cut 3/4 in. less than assembly height.

1A. **Framing Members* - Steel Studs** — Not shown - In lieu of Item 1 — For use with Item 2A, proprietary channel shaped steel studs, 1-1/4 in. deep by min 3-5/8 in. wide fabricated from min 0.020 in. thick galv steel. Studs cut 3/4 in. less in length than assembly height. Max stud spacing is 24 in. OC.

CALIFORNIA EXPANDED METAL PRODUCTS CO — Viper20™

MARINO/WARE, DIV OF WARE INDUSTRIES INC — Viper20™

PHILLIPS MFG CO L L C — Viper20™

1B. **Framing Members*— Steel Studs** — Not shown - In lieu of Item 1 — For use with Item 2B, channel shaped steel studs, 1-1/4 in. deep by min 3-5/8 in. wide fabricated from min 0.018 in. thick galv steel. Studs cut 3/4 in. less in length than assembly height. Max stud spacing is 24 in. OC.

CLARKDIETRICH BUILDING SYSTEMS — CD ProSTUD

DMFCWBS L L C — ProSTUD

MBA BUILDING SUPPLIES — ProSTUD

RAM SALES L L C — Ram ProTRAK

SOUTHEASTERN STUD & COMPONENTS INC — ProSTUD

STEEL STRUCTURAL SYSTEMS L L C — Tri-S ProSTUD

1C. **Framing Members* - Steel Studs** — Not shown - In lieu of Item 1 — For use with Item 2C, proprietary channel shaped steel studs, 1-1/4 in. deep by min 3-5/8 in. wide fabricated from min 0.020 in. thick galv steel. Studs cut 3/4 in. less in length than assembly height. Max stud spacing is 24 in. OC.

TELLING INDUSTRIES L L C — Viper20™

1D. **Framing Members*— Steel Studs** — Not shown - In lieu of Item 1 — For use with Item 2D, channel shaped steel studs, 1-1/4 in. deep by min 3-5/8 in. wide fabricated from min 0.018 in. thick galv steel. Studs cut 3/4 in. less in length than assembly height. Max stud spacing is 24 in. OC.

TELLING INDUSTRIES L L C — TRUE-STUD™

2. **Floor and Ceiling Runners** — Channel-shaped, min 3-5/8 in. wide with 1-1/8 in. flanges, fabricated from No. 25 MSG galv steel. Attached to floor and ceiling with runners fasteners 24 in. OC, max.

2A. **Framing Members* - Floor and Ceiling Runner** — Not shown - In lieu of Item 2 — For use with Item 1A, proprietary channel shaped runners, 1-1/4 in. deep by min 3-5/8 in. wide fabricated from min 0.020 in. thick galv steel, attached to floor and ceiling with fasteners spaced 24 in. OC max.

CALIFORNIA EXPANDED METAL PRODUCTS CO — Viper20™ Track

MARINO/WARE, DIV OF WARE INDUSTRIES INC — Viper20™ Track

PHILLIPS MFG CO L L C — Viper20™ Track

2B. **Framing Members*— Floor and Ceiling Runners** — Not shown - In lieu of Item 2 — For use with Item 1B, channel shaped runners, 1-1/4 in. deep by min 3-5/8 in. wide fabricated from min 0.018 in. thick galv steel, attached to floor and ceiling with fasteners spaced 24 in. OC max.

CLARKDIETRICH BUILDING SYSTEMS — CD ProTRAK

DMFCWBS L L C — ProTRAK

MBA BUILDING SUPPLIES — ProTRAK

RAM SALES L L C — Ram ProSTUD

SOUTHEASTERN STUD & COMPONENTS INC — ProTRAK

STEEL STRUCTURAL SYSTEMS L L C — Tri-S ProTRAK

2C. **Framing Members* - Floor and Ceiling Runner** — Not shown - In lieu of Item 2 — For use with Item 1C, proprietary channel shaped runners, 1-1/4 in. deep by min 3-5/8 in. wide fabricated from min 0.020 in. thick galv steel, attached to floor and ceiling with fasteners spaced 24 in. OC max.

TELLING INDUSTRIES L L C — Viper20™ Track

2D. **Framing Members*— Floor and Ceiling Runners** — Not shown - In lieu of Item 2 — For use with Item 1D, channel shaped runners, 1-1/4 in. deep by min 3-5/8 in. wide fabricated from min 0.018 in. thick galv steel, attached to floor and ceiling with fasteners spaced 24 in. OC max.

TELLING INDUSTRIES L L C — TRUE-TRACK™

3. **Mineral and Fiber Boards*** — 0.591 in. (15 mm) thick, square edge boards. Board joints centered on studs. Attached to studs and floor and ceiling runners with screws, (Item 4). Max spacing of screws along the board perimeter and in the field is 12 in. OC. Screws along joints spaced 5/16 in. to 3/8 in. from the joint and staggered a min of 1-3/4 in. from the screws on the opposite side of the joints.

PROMAT UK LTD — PROMAT-H.

4. **Fasteners** — Type S, bugle-head steel screws, self-drilling and self-tapping, 1-5/8 in. long.

5. **Batts and Blankets*** — Min 3-1/4 in. thick mineral wool batt insulation, nom 4 pcf density.

See **Batts and Blankets** (BZJZ) category for names of manufacturers.

5A. **Fiber, Sprayed*** — As an alternate to **Batts and Blankets** (Item 5) — (100% Borate Formulation) —

Spray applied cellulose material. The fiber is applied with water to completely fill the enclosed cavity in accordance with the application instructions supplied with the product with a nominal dry density of 2.7 lb/ft³. Alternate Application Method: The fiber is applied without water or adhesive at a nominal dry density of 3.5 lb/ft³, in accordance with the application instructions supplied with the product.

U S GREENFIBER L L C — INS735 & INS745 for use with wet or dry application. INS765LD and INS770LD are to be used for dry application only.

5B. Fiber, Sprayed* — As an alternate to Batts and Blankets (Item 5) - Spray applied cellulose fiber. The fiber is applied with water to completely fill the enclosed cavity in accordance with the application instructions supplied with the product. The minimum dry density shall be 4.30 lbs/ft³.

INTERNATIONAL CELLULOSE CORP — Celbar-RL

*Bearing the UL Classification Mark

[Last Updated](#) on 2013-04-09

[Questions?](#)

[Print this page](#)

[Terms of Use](#)

[Page Top](#)

© 2013 UL LLC

When the UL Leaf Mark is on the product, or when the word "Environment" is included in the UL Mark, please search the [UL Environment database](#) for additional information regarding this product's certification.

The appearance of a company's name or product in this database does not in itself assure that products so identified have been manufactured under UL's Follow-Up Service. Only those products bearing the UL Mark should be considered to be Certified and covered under UL's Follow-Up Service. Always look for the Mark on the product.

UL permits the reproduction of the material contained in the Online Certification Directory subject to the following conditions: 1. The Guide Information, Assemblies, Constructions, Designs, Systems, and/or Certifications (files) must be presented in their entirety and in a non-misleading manner, without any manipulation of the data (or drawings). 2. The statement "Reprinted from the Online Certifications Directory with permission from UL" must appear adjacent to the extracted material. In addition, the reprinted material must include a copyright notice in the following format: "© 2013 UL LLC".