



Design No. U494

BXUV.U494

Fire-resistance Ratings - ANSI/UL 263

[Page Bottom](#)

Design/System/Construction/Assembly Usage Disclaimer

- Authorities Having Jurisdiction should be consulted in all cases as to the particular requirements covering the installation and use of UL Certified products, equipment, system, devices, and materials.
- Authorities Having Jurisdiction should be consulted before construction.
- Fire resistance assemblies and products are developed by the design submitter and have been investigated by UL for compliance with applicable requirements. The published information cannot always address every construction nuance encountered in the field.
- When field issues arise, it is recommended the first contact for assistance be the technical service staff provided by the product manufacturer noted for the design. Users of fire resistance assemblies are advised to consult the general Guide Information for each product category and each group of assemblies. The Guide Information includes specifics concerning alternate materials and alternate methods of construction.
- Only products which bear UL's Mark are considered Certified.

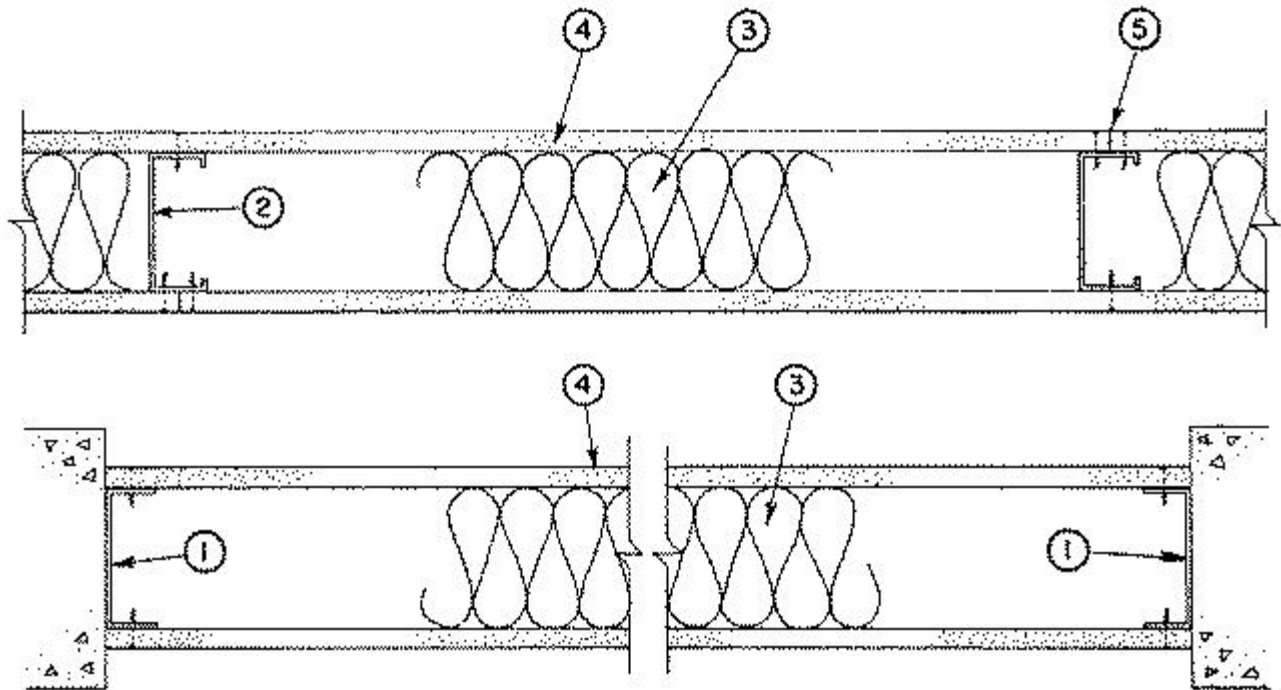
Fire-resistance Ratings - ANSI/UL 263

[See General Information for Fire-resistance Ratings - ANSI/UL 263](#)

Design No. U494

June 06, 2013

Nonbearing Wall Rating — 1 HR.



1. **Floor and Ceiling Runners** — Channel-shaped runners, min 2-1/2 in. wide by 1 in. deep, fabricated from 25 MSG galv steel. Attached to floor and ceiling with fasteners.

1A. **Framing Members* - Floor and Ceiling Runner** — Not shown - In lieu of Item 1 — For use with Item 2A, proprietary channel shaped runners, 1-1/4 in. deep by min 2-1/2 in. wide fabricated from min 0.020 in.

thick galv steel, attached to floor and ceiling with fasteners spaced 24 in. OC max.

CALIFORNIA EXPANDED METAL PRODUCTS CO — Viper20™ Track

MARINO/WARE, DIV OF WARE INDUSTRIES INC — Viper20™ Track

PHILLIPS MFG CO L L C — Viper20™ Track

1B. Framing Members*— Floor and Ceiling Runners — Not shown - In lieu of Item 1 — For use with Item 2B, channel shaped runners, 1-1/4 in. deep by min 2-1/2 in. wide fabricated from min 0.018 in. thick galv steel, attached to floor and ceiling with fasteners spaced 24 in. OC max.

CLARKDIETRICH BUILDING SYSTEMS — CD ProTRAK

DMFCWBS L L C — ProTRAK

MBA BUILDING SUPPLIES — ProTRAK

RAM SALES L L C — Ram ProTRAK

SOUTHEASTERN STUD & COMPONENTS INC — ProTRAK

STEEL STRUCTURAL SYSTEMS L L C — Tri-S ProTRAK

1C. Framing Members* - Floor and Ceiling Runner — Not shown - In lieu of Item 1 — For use with Item 2C, proprietary channel shaped runners, 1-1/4 in. deep by min 2-1/2 in. wide fabricated from min 0.020 in. thick galv steel, attached to floor and ceiling with fasteners spaced 24 in. OC max.

TELLING INDUSTRIES L L C — Viper20™ Track

1D. Framing Members*— Floor and Ceiling Runners — Not shown - In lieu of Item 1 — For use with Item 2D, channel shaped runners, 1-1/4 in. deep by min 2-1/2 in. wide fabricated from min 0.018 in. thick galv steel, attached to floor and ceiling with fasteners spaced 24 in. OC max.

TELLING INDUSTRIES L L C — TRUE-TRACK™

2. Studs — Channel-shaped, min 2-1/2 in. wide by 1-1/4 in. deep with 5/16 in. folded back return. Fabricated from 25 MSG galv steel. Spaced 16 or 24 in. OC. Length of studs to be 1 in. less than assembly height.

2A. Framing Members* - Steel Studs — Not shown - In lieu of Item 2 — For use with Item 1A, proprietary channel shaped steel studs, 1-1/4 in. deep by min 2-1/2 in. wide fabricated from min 0.0200 in. thick galv steel. Spaced max 24 in. OC. Studs cut 1 in. less in length than assembly height.

CALIFORNIA EXPANDED METAL PRODUCTS CO — Viper20™

MARINO/WARE, DIV OF WARE INDUSTRIES INC — Viper20™

PHILLIPS MFG CO L L C — Viper20™

2B. Framing Members*— Steel Studs — Not shown - In lieu of Item 2 — For use with Item 1B, channel shaped steel studs, 1-1/4 in. deep by min 2-1/2 in. wide fabricated from min 0.018 in. thick galv steel, spaced max 24 in. OC. Studs cut 1 in. less in length than assembly height.

CLARKDIETRICH BUILDING SYSTEMS — CD ProSTUD

DMFCWBS L L C — ProSTUD

MBA BUILDING SUPPLIES — ProSTUD

RAM SALES L L C — Ram ProSTUD

SOUTHEASTERN STUD & COMPONENTS INC — ProSTUD

STEEL STRUCTURAL SYSTEMS L L C — Tri-S ProSTUD

2C. Framing Members* - Steel Studs — Not shown - In lieu of Item 2 — For use with Item 1C, proprietary channel shaped steel studs, 1-1/4 in. deep by min 2-1/2 in. wide fabricated from min 0.0200 in. thick galv steel. Spaced max 24 in. OC. Studs cut 1 in. less in length than assembly height.

TELLING INDUSTRIES L L C — Viper20™

2D. Framing Members*— Steel Studs — Not shown - In lieu of Item 2 — For use with Item 1D, channel shaped steel studs, 1-1/4 in. deep by min 2-1/2 in. wide fabricated from min 0.018 in. thick galv steel, spaced max 24 in. OC. Studs cut 1 in. less in length than assembly height.

TELLING INDUSTRIES L L C — TRUE-STUD™

3. Batts and Blankets* — Nom 2-1/2 in. thick glass fiber batts supplied in 16 or 24 in. widths, installed to fill interior of stud cavities and friction held.

JOHNS MANVILLE INTERNATIONAL INC

OWENS CORNING

4. Gypsum Board* — Any 5/8 in. thick **UL Classified Gypsum Board that is eligible for use in Design Nos. L501, G512 or U305.** Nom 5/8 in. thick, 4 ft wide, applied vertically, attached to steel studs on both sides and floor and ceiling runners with 0.127 in. diam self-drilling, self-tapping steel screws, 1 in. long, spaced 8 in. O.C. along edges of boards and 12 in. O.C. in the field of the boards. Joints centered over studs and staggered on opposite sides of the assembly.

ACADIA DRYWALL SUPPLIES LTD ([View Classification](#)) — CKNX.R25370

AMERICAN GYPSUM CO ([View Classification](#)) — CKNX.R14196

BEIJING NEW BUILDING MATERIALS PUBLIC LTD CO ([View Classification](#)) — CKNX.R19374

CERTAINTED GYPSUM CANADA INC ([View Classification](#)) — CKNX.R15187

CERTAINTED GYPSUM INC ([View Classification](#)) — CKNX.R3660

CGC INC ([View Classification](#)) — CKNX.R19751

GEORGIA-PACIFIC GYPSUM L L C ([View Classification](#)) — CKNX.R2717

LAFARGE NORTH AMERICA INC ([View Classification](#)) — CKNX.R18482

LOADMASTER SYSTEMS INC ([View Classification](#)) — CKNX.R11809

NATIONAL GYPSUM CO ([View Classification](#)) — CKNX.R3501

PABCO BUILDING PRODUCTS L L C, DBA PABCO GYPSUM ([View Classification](#)) — CKNX.R7094

PANEL REY S A ([View Classification](#)) — CKNX.R21796

SIAM GYPSUM INDUSTRY (SARABURI) CO LTD ([View Classification](#)) — CKNX.R19262

TEMPLE-INLAND ([View Classification](#)) — CKNX.R6937

THAI GYPSUM PRODUCTS PCL ([View Classification](#)) — CKNX.R27517

UNITED STATES GYPSUM CO ([View Classification](#)) — CKNX.R1319

USG MEXICO S A DE C V ([View Classification](#)) — CKNX.R16089

4A. **Wall and Partition Facings and Accessories*** — (As an alternate to Items 4 through 4A) — Nominal 5/8 in. thick, 4 ft wide panels, applied vertically and secured as described in Item 4.

SERIOUS ENERGY INC — Types QuietRock ES, QuietRock 527.

5. **Joint Tape and Compound** — Vinyl-based powder or premixed joint compound, applied in two coats to joints and screw heads; paper tape 2 in. wide, embedded in first layer of compound over all joints.

*Bearing the UL Classification Mark

[Last Updated](#) on 2013-06-06

[Questions?](#)

[Print this page](#)

[Terms of Use](#)

[Page Top](#)

© 2013 UL LLC

When the UL Leaf Mark is on the product, or when the word "Environment" is included in the UL Mark, please search the [UL Environment database](#) for additional information regarding this product's certification.

The appearance of a company's name or product in this database does not in itself assure that products so identified have been manufactured under UL's Follow-Up Service. Only those products bearing the UL Mark should be considered to be Certified and covered under UL's Follow-Up Service. Always look for the Mark on the product.

UL permits the reproduction of the material contained in the Online Certification Directory subject to the following conditions: 1. The Guide Information, Assemblies, Constructions, Designs, Systems, and/or Certifications (files) must be presented in their entirety and in a non-misleading manner, without any manipulation of the data (or drawings). 2. The statement "Reprinted from the Online Certifications Directory with permission from UL" must appear adjacent to the extracted material. In addition, the reprinted material must include a copyright notice in the following format: "© 2013 UL LLC".