



## Design No. V417

### BXUV.V417

### Fire-resistance Ratings - ANSI/UL 263

[Page Bottom](#)

#### Design/System/Construction/Assembly Usage Disclaimer

- Authorities Having Jurisdiction should be consulted in all cases as to the particular requirements covering the installation and use of UL Certified products, equipment, system, devices, and materials.
- Authorities Having Jurisdiction should be consulted before construction.
- Fire resistance assemblies and products are developed by the design submitter and have been investigated by UL for compliance with applicable requirements. The published information cannot always address every construction nuance encountered in the field.
- When field issues arise, it is recommended the first contact for assistance be the technical service staff provided by the product manufacturer noted for the design. Users of fire resistance assemblies are advised to consult the general Guide Information for each product category and each group of assemblies. The Guide Information includes specifics concerning alternate materials and alternate methods of construction.
- Only products which bear UL's Mark are considered Certified.

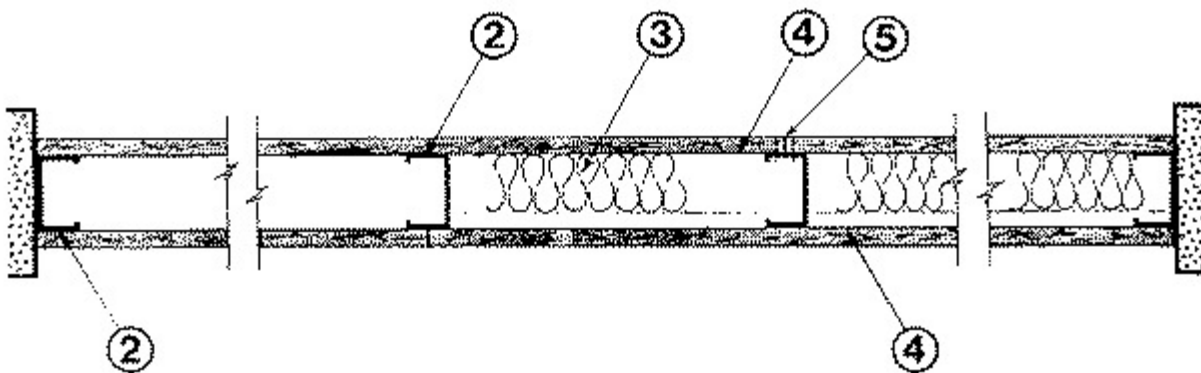
#### Fire-resistance Ratings - ANSI/UL 263

[See General Information for Fire-resistance Ratings - ANSI/UL 263](#)

## Design No. V417

June 06, 2013

Nonbearing Wall Rating — 1 Hr



1. **Floor and Ceiling Runners** — (Not Shown) — Channel shaped runners, 3-5/8 in. wide (min), 1-1/4 in. legs, formed from min No. 25 MSG galv steel, attached to floor and ceiling with fasteners spaced 24 in. OC max.

1A. **Framing Members\* - Floor and Ceiling Runners** — Not shown - In lieu of Item 1 — For use with Item 2A, proprietary channel shaped runners, 1-1/4 in. deep by min 3-5/8 in. wide fabricated from min 0.020 in. thick galv steel, attached to floor and ceiling with fasteners spaced 24 in. OC max.

**CALIFORNIA EXPANDED METAL PRODUCTS CO** — Viper20™ Track

**MARINO/WARE, DIV OF WARE INDUSTRIES INC** — Viper20™ Track

**PHILLIPS MFG CO L L C** — Viper20™ Track

**1B. Framing Members\*— Floor and Ceiling Runners** — Not shown - In lieu of Item 1 — For use with Item 2B, channel shaped runners, 1-1/4 in. deep by min 3-5/8 in. wide fabricated from min 0.018 in. thick galv steel, attached to floor and ceiling with fasteners spaced 24 in. OC max.

**CLARKDIETRICH BUILDING SYSTEMS** — CD ProTRAK

**DMFCWBS L L C** — ProTRAK

**MBA BUILDING SUPPLIES** — ProTRAK

**RAM SALES L L C** — Ram ProTRAK

**SOUTHEASTERN STUD & COMPONENTS INC** — ProTRAK

**STEEL STRUCTURAL SYSTEMS L L C** — Tri-S ProTRAK

**1C. Framing Members\* - Floor and Ceiling Runners** — Not shown - In lieu of Item 1 — For use with Item 2C, proprietary channel shaped runners, min 3-5/8 in. wide, attached to floor and ceiling with fasteners spaced 24 in. OC max.

**CALIFORNIA EXPANDED METAL PRODUCTS CO** — Viper25™Track

**MARINO/WARE, DIV OF WARE INDUSTRIES INC** — Viper25™Track

**PHILLIPS MFG CO L L C** — Viper25™ Track

**1D. Framing Members\* - Floor and Ceiling Runners** — Not shown - In lieu of Item 1 — For use with Item 2D, proprietary channel shaped runners, 1-1/4 in. deep by min 3-5/8 in. wide fabricated from min 0.020 in. thick galv steel, attached to floor and ceiling with fasteners spaced 24 in. OC max.

**TELLING INDUSTRIES L L C** — Viper20™ Track

**1E. Framing Members\*— Floor and Ceiling Runners** — Not shown - In lieu of Item 1 — For use with Item 2E, channel shaped runners, 1-1/4 in. deep by min 3-5/8 in. wide fabricated from min 0.018 in. thick galv steel, attached to floor and ceiling with fasteners spaced 24 in. OC max.

**TELLING INDUSTRIES L L C** — TRUE-TRACK™

**1F. Framing Members\* - Floor and Ceiling Runners** — Not shown - In lieu of Item 1 — For use with Item 2F, proprietary channel shaped runners, min 3-5/8 in. wide, attached to floor and ceiling with fasteners spaced 24 in. OC max.

**TELLING INDUSTRIES L L C** — ViperTrack™

**2. Steel Studs** — Channel shaped, 3-5/8 in. wide (min), 1-1/4 in. legs, 3/8 in. folded back returns, formed from min No. 25 MSG galv steel spaced 24 in. OC max.

**2A. Framing Members\* - Steel Studs** — Not shown - In lieu of Item 2 — For use with Item 1A, proprietary channel shaped steel studs, 1-1/4 in. deep by min 3-5/8 in. wide fabricated from min 0.020 in. thick galv steel. Studs cut 3/8 in. less in length than assembly height. Spaced 24 in. OC max.

**CALIFORNIA EXPANDED METAL PRODUCTS CO — Viper20™**

**MARINO/WARE, DIV OF WARE INDUSTRIES INC — Viper20™**

**PHILLIPS MFG CO L L C — Viper20™**

**2B. Framing Members\*— Steel Studs —** Not shown - In lieu of Item 2 — For use with Item 1B, channel shaped steel studs, 1-1/4 in. deep by min 3-5/8 in. wide fabricated from min 0.018 in. thick galv steel. Studs cut 3/8 in. less in length than assembly height. Spaced 24 in. OC max.

**CLARKDIETRICH BUILDING SYSTEMS — CD ProSTUD**

**DMFCWBS L L C — ProSTUD**

**MBA BUILDING SUPPLIES — ProSTUD**

**RAM SALES L L C — Ram ProSTUD**

**SOUTHEASTERN STUD & COMPONENTS INC — ProSTUD**

**STEEL STRUCTURAL SYSTEMS L L C — Tri-S ProSTUD**

**2C. Framing Members\* - Steel Studs —** Not shown - In lieu of Item 2 — For use with Items 1C, 4D, and 4E only, proprietary channel shaped steel studs, min 3-5/8 in. wide. Studs cut 3/8 in. less in length than assembly height. Spaced 24 in. OC max.

**CALIFORNIA EXPANDED METAL PRODUCTS CO — Viper25™**

**MARINO/WARE, DIV OF WARE INDUSTRIES INC — Viper25™**

**PHILLIPS MFG CO L L C — Viper25™**

**2D. Framing Members\* - Steel Studs —** Not shown - In lieu of Item 2 — For use with Item 1D, proprietary channel shaped steel studs, 1-1/4 in. deep by min 3-5/8 in. wide fabricated from min 0.020 in. thick galv steel. Studs cut 3/8 in. less in length than assembly height. Spaced 24 in. OC max.

**TELLING INDUSTRIES L L C — Viper20™**

**2E. Framing Members\*— Steel Studs —** Not shown - In lieu of Item 2 — For use with Item 1E, channel shaped steel studs, 1-1/4 in. deep by min 3-5/8 in. wide fabricated from min 0.018 in. thick galv steel. Studs cut 3/8 in. less in length than assembly height. Spaced 24 in. OC max.

**TELLING INDUSTRIES L L C — TRUE-STUD™**

**2F. Framing Members\* - Steel Studs —** Not shown - In lieu of Item 2 — For use with Items 1F, 4D, and 4E only, proprietary channel shaped steel studs, min 3-5/8 in. wide. Studs cut 3/8 in. less in length than assembly height. Spaced 24 in. OC max.

**TELLING INDUSTRIES L L C — Viper25™**

3. **Batts and Blankets\*** — Mineral wool batts partially or completely filling stud cavity.

**ROCK WOOL MANUFACTURING CO** — Delta Board.

**ROCKWOOL MALAYSIA SDN BHD**

**ROXUL INC**

4. **Gypsum Board\*** — 5/8 in. thick, 4 ft wide, attached to steel studs and floor and ceiling track with 1 in. long, Type S steel screws spaced 8 in. OC along edges of board and 12 in. OC in the field of the board. Joints oriented vertically and staggered on opposite sides of the assembly. When attached to item 6 (furring channels), gypsum board is screw attached to furring channels with 1 in. long, Type S steel screws spaced 12 in. OC.

**ACADIA DRYWALL SUPPLIES LTD** — Type X

**AMERICAN GYPSUM CO** — Types AGX-1, M-Glass, AG-C.

**BEIJING NEW BUILDING MATERIALS PUBLIC LTD CO** — Type DBX-1

**CERTAINTED GYPSUM INC** — Type EGRG, GlasRoc, SilentFX, Type X, 5/8" Easi-Lite Type X.

**CERTAINTED GYPSUM CANADA INC** — Type X or Type Abuse-Resistant, 5/8" Easi-Lite Type X.

**CGC INC** — Types AR, C, IP-AR, IP-X1, IP-X2, IPC-AR, SCX, SHX, ULX, WRC or WRX

**GEORGIA-PACIFIC GYPSUM L L C** — Types 5, 6, 9, C, DAP, DD, DA, DAPC, DGG, DS, GPFS6, LS.

**LAFARGE NORTH AMERICA INC** — Types LGFC-C, LGFC2, LGFC2A, LGFC6, LGFC6A, LGFC-C/A, LGFC-WD, LGLLX.

**NATIONAL GYPSUM CO** — Types FSK-C, FSK-G, FSW, FSW-C, FSW-G, FSW-6, FSL.

**PABCO BUILDING PRODUCTS L L C, DBA PABCO GYPSUM** — Types PG-C, C, PG-9, or PG-11, PGS-WRS.

**SIAM GYPSUM INDUSTRY (SARABURI) CO LTD** — Type EX-1

**TEMPLE-INLAND** — Types TP-5, TG-C, Type X, Veneer Plaster Base - Type X, Water Rated - Type X, Sheathing - Type X, Soffit - Type X, GreenGlass Type X, Type X ComfortGuard Sound Deadening Gypsum Board.

**THAI GYPSUM PRODUCTS PCL** — Type X

**UNITED STATES GYPSUM CO** — Types AR, C, FRX-G, IP-AR, IP-X1, IP-X2, IPC-AR, SCX, SHX, ULX, WRC, WRX, USGX (Joint tape and compound, Item 5, optional for use with Type USGX)

**USG MEXICO S A DE C V** — Types AR, C, IP-AR, IP-X1, IP-X2, IPC-AR, SCX, SHX, ULX, WRC or WRX

4A. **Gypsum Board\*** — (As an alternate to item 4) — Nom 3/4 in. thick, 4 ft wide, installed as described in Item 4 with screw length increased to 1-1/4 in.

**CGC INC** — Types AR, IP-AR.

**UNITED STATES GYPSUM CO** — Types AR, IP-AR.

**USG MEXICO S A DE C V** — Types AR, IP-AR.

4B. **Gypsum Board\*** — (As alternate to Item 4) - Nom 5/8 in. thick gypsum panels with beveled, square or tapered edges, applied vertically or horizontally. Vertical joints centered over studs and staggered one stud cavity on opposite sides of studs. Horizontal edge joints and horizontal butt joints on opposite sides of studs need not be staggered or backed by steel framing. Panels attached to steel studs and floor runner with 1 in. long Type S steel screws spaced 8 in. OC when applied horizontally, or 8 in. OC along vertical and bottom edges and 12 in. OC in the field when panels are applied vertically. When used in widths other than 48 in., gypsum panels to be installed horizontally.

**CERTAINTED GYPSUM INC** — Type X, Type C.

**CERTAINTED GYPSUM CANADA INC** — Type X, Type C.

**THAI GYPSUM PRODUCTS PCL** — Type X, Type C.

4C. **Wall and Partition Facings and Accessories\*** — (As an alternate to Items 4 through 4B) — Nominal 5/8 in. thick, 4 ft wide panels, applied vertically and secured as described in Item 4.

**SERIOUS ENERGY INC** — Types QuietRock ES, QuietRock 527.

4D. **Gypsum Board\*** — For Use with item 2C, 5/8 in. thick, 4 ft wide, attached to steel studs and floor and ceiling track with 1 in. long, Type S steel screws spaced 8 in. OC along edges of board and 12 in. OC in the field of the board. Joints oriented vertically or horizontally and staggered on opposite sides of the assembly. When applied horizontally, joints shall be backed. When attached to item 6 (furring channels), gypsum board is screw attached to furring channels with 1 in. long, Type S steel screws spaced 12 in. OC.

4E. **Gypsum Board\*** — (As an alternate to Item 4) - Nom 5/8 in. thick gypsum panels with beveled, square or tapered edges, applied vertically or horizontally. Vertical joints centered over studs and staggered one stud cavity on opposite sides of studs. Horizontal edge joints and horizontal butt joints on opposite sides of studs need not be staggered or backed by steel framing. Panels attached to steel studs and floor runner with 1 in. long Type S steel screws spaced 8 in. OC when applied horizontally, or 8 in. OC along vertical and bottom edges and 12 in. OC in the field when panels are applied vertically. When used in widths other than 48 in., gypsum panels to be installed horizontally.

**CGC INC** — Type ULX

**UNITED STATES GYPSUM CO** — Type ULX

**USG MEXICO S A DE C V** — Type ULX

5. **Joint Tape Compound** — Vinyl, dry or premixed joint compound, applied in two coats to joints and screw heads; paper tape, 2 in. wide, embedded in first layer of compound over all joints. As an alternate, nom 3/32 in. thick gypsum veneer plaster may be applied to the entire surface of Classified veneer baseboard. Joints reinforced.

6. **Furring Channel** — (Optional — Not Shown) — Resilient 25 MSG galv steel furring channels spaced vertically max 24 in. OC, flange portion attached to each intersecting stud with 1/2 in. long Type S-12 pan-head steel screws. Not for use with Type FRX gypsum panels.

\*Bearing the UL Classification Mark

[Questions?](#)[Print this page](#)[Terms of Use](#)[Page Top](#)

© 2013 UL LLC

When the UL Leaf Mark is on the product, or when the word "Environment" is included in the UL Mark, please search the [UL Environment database](#) for additional information regarding this product's certification.

The appearance of a company's name or product in this database does not in itself assure that products so identified have been manufactured under UL's Follow-Up Service. Only those products bearing the UL Mark should be considered to be Certified and covered under UL's Follow-Up Service. Always look for the Mark on the product.

UL permits the reproduction of the material contained in the Online Certification Directory subject to the following conditions: 1. The Guide Information, Assemblies, Constructions, Designs, Systems, and/or Certifications (files) must be presented in their entirety and in a non-misleading manner, without any manipulation of the data (or drawings). 2. The statement "Reprinted from the Online Certifications Directory with permission from UL" must appear adjacent to the extracted material. In addition, the reprinted material must include a copyright notice in the following format: "© 2013 UL LLC".