



## Design No. V419

### BXUV.V419

### Fire Resistance Ratings - ANSI/UL 263

[Page Bottom](#)

#### Design/System/Construction/Assembly Usage Disclaimer

- Authorities Having Jurisdiction should be consulted in all cases as to the particular requirements covering the installation and use of UL Certified products, equipment, system, devices, and materials.
- Authorities Having Jurisdiction should be consulted before construction.
- Fire resistance assemblies and products are developed by the design submitter and have been investigated by UL for compliance with applicable requirements. The published information cannot always address every construction nuance encountered in the field.
- When field issues arise, it is recommended the first contact for assistance be the technical service staff provided by the product manufacturer noted for the design. Users of fire resistance assemblies are advised to consult the general Guide Information for each product category and each group of assemblies. The Guide Information includes specifics concerning alternate materials and alternate methods of construction.
- Only products which bear UL's Mark are considered Certified.

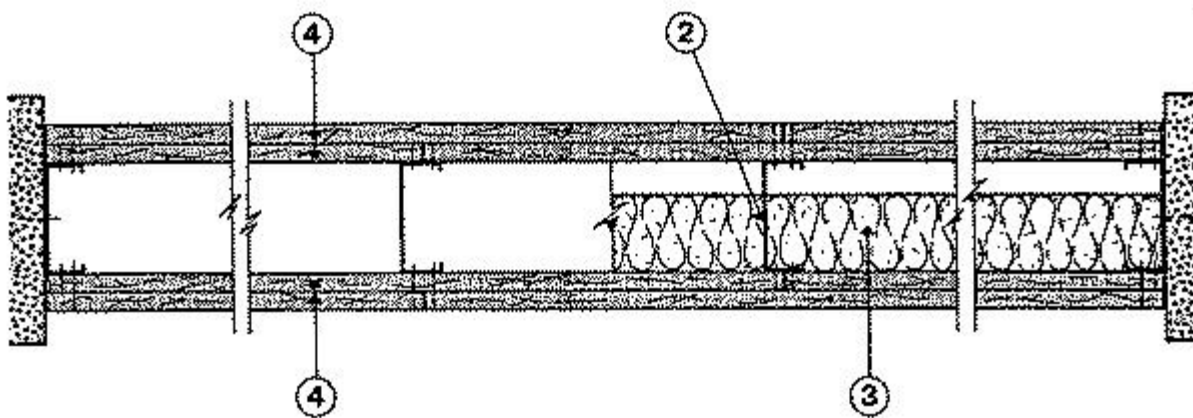
#### Fire-resistance Ratings - ANSI/UL 263

[See General Information for Fire-resistance Ratings - ANSI/UL 263](#)

## Design No. V419

June 06, 2013

Nonbearing Wall Rating — 2 Hr



1. **Floor and Ceiling Runners** — (Not Shown) — 25 MSG (min) galv steel 1 in. high, return legs 2-1/2 in. wide (min), attached to floor and ceiling with fasteners 24 in. OC.

1A. **Framing Members\* - Floor and Ceiling Runner** — Not shown - In lieu of Item 1 — For use with Item 2A, proprietary channel shaped runners, 1-1/4 in. deep by min 2-1/2 in. wide fabricated from min 0.020 in. thick galv steel, attached to floor and ceiling with fasteners spaced 24 in. OC max.

**CALIFORNIA EXPANDED METAL PRODUCTS CO** — Viper20™ Track

**MARINO/WARE, DIV OF WARE INDUSTRIES INC** — Viper20™ Track

**PHILLIPS MFG CO L L C** — Viper20™ Track

**1B. Framing Members\*— Floor and Ceiling Runners** — Not shown - In lieu of Item 1 — For use with Item 2B, channel shaped runners, 1-1/4 in. deep by min 2-1/2 in. wide fabricated from min 0.018 in. thick galv steel, attached to floor and ceiling with fasteners spaced 24 in. OC max.

**CLARKDIETRICH BUILDING SYSTEMS** — CD ProTRAK

**DMFCWBS L L C** — ProTRAK

**MBA BUILDING SUPPLIES** — ProTRAK

**RAM SALES L L C** — Ram ProTRAK

**SOUTHEASTERN STUD & COMPONENTS INC** — ProTRAK

**STEEL STRUCTURAL SYSTEMS L L C** — Tri-S ProTRAK

**1C. Framing Members\* - Floor and Ceiling Runner** — Not shown - In lieu of Item 1 — For use with Item 2C, proprietary channel shaped runners, 1-1/4 in. deep by min 2-1/2 in. wide fabricated from min 0.020 in. thick galv steel, attached to floor and ceiling with fasteners spaced 24 in. OC max.

**TELLING INDUSTRIES L L C** — Viper20™ Track

**1D. Framing Members\*— Floor and Ceiling Runners** — Not shown - In lieu of Item 1 — For use with Item 2D, channel shaped runners, 1-1/4 in. deep by min 2-1/2 in. wide fabricated from min 0.018 in. thick galv steel, attached to floor and ceiling with fasteners spaced 24 in. OC max.

**TELLING INDUSTRIES L L C** — TRUE-TRACK™

**2. Steel Studs** — 2-1/2 in. wide (min), 1-1/4 in. legs, 3/8 in. return, formed of 25 MSG (min) galv steel max stud spacing 24 in. OC. Studs to be cut 3/4 in. less than assembly height.

**2A. Framing Members\* - Steel Studs** — Not shown - In lieu of Item 2 — For use with Item 1A, proprietary channel shaped steel studs, 1-1/4 in. deep by min 2-1/2 in. wide fabricated from min 0.020 in. thick galv steel, spaced max 24 in. OC. Studs cut 3/4 in. less in length than assembly height.

**CALIFORNIA EXPANDED METAL PRODUCTS CO** — Viper20™

**MARINO/WARE, DIV OF WARE INDUSTRIES INC** — Viper20™

**PHILLIPS MFG CO L L C** — Viper20™

**2B. Framing Members\*— Steel Studs** — Not shown - In lieu of Item 2 — For use with Item 1B, channel shaped steel studs, 1-1/4 in. deep by min 2-1/2 in. wide fabricated from min 0.018 in. thick galv steel, spaced max 24 in. OC. Studs cut 3/4 in. less in length than assembly height.

**CLARKDIETRICH BUILDING SYSTEMS** — CD ProSTUD

**DMFCWBS L L C** — ProSTUD

**MBA BUILDING SUPPLIES** — ProSTUD

**RAM SALES L L C** — Ram ProSTUD

**SOUTHEASTERN STUD & COMPONENTS INC** — ProSTUD

**STEEL STRUCTURAL SYSTEMS L L C** — Tri-S ProSTUD

2C. **Framing Members\* - Steel Studs** — Not shown - In lieu of Item 2 — For use with Item 1C, proprietary channel shaped steel studs, 1-1/4 in. deep by min 2-1/2 in. wide fabricated from min 0.020 in. thick galv steel, spaced max 24 in. OC. Studs cut 3/4 in. less in length than assembly height.

**TELLING INDUSTRIES L L C** — Viper20™

2D. **Framing Members\*— Steel Studs** — Not shown - In lieu of Item 2 — For use with Item 1D, channel shaped steel studs, 1-1/4 in. deep by min 2-1/2 in. wide fabricated from min 0.018 in. thick galv steel, spaced max 24 in. OC. Studs cut 3/4 in. less in length than assembly height.

**TELLING INDUSTRIES L L C** — TRUE-STUD™

3. **Batts and Blankets\*** — Mineral wool batts partially or completely filling stud cavity.

**ROCK WOOL MANUFACTURING CO** — Delta Board.

**ROCKWOOL MALAYSIA SDN BHD**

**ROXUL INC**

4. **Gypsum Board\*** — 5/8 in. thick, outer layer paper, glass mat or vinyl surfaced. (Laminated System) Gypsum board applied vertically in two layers. Inner layer attached to studs with 1 in. long Type S steel screws spaced 8 in. OC along vertical edges, and 12 in. OC in the field and outer layer laminated to inner layer with joint compound, applied with a notched spreader producing continuous beads of compound about 3/8 in. in diam spaced not greater than 2 in. OC. Joints of laminated outer layer offset 12 in. from inner layer joints. Outer layer wallboard attached to floor and ceiling runner track with 1-5/8 in. long Type S steel screws spaced 12 in. OC.

Optional, (Direct Attached System), Inner layer attached to studs with 1 in. long Type S steel screws spaced 16 in. OC in the field and along the vertical edges. Outer layer attached to the studs over the inner layer with 1-5/8 in. long Type S steel screws spaced 16 in. OC in the field and along the vertical edges and 12 in. OC to the floor and ceiling runners. Joints of screw-attached outer layer offset from inner layer joints. Joints of outer layer may be taped or untaped.

Nom 3/32 in. thick gypsum veneer plaster may be applied to the entire surface of Classified veneer baseboard. Joints reinforced.

**ACADIA DRYWALL SUPPLIES LTD** — Type X

**AMERICAN GYPSUM CO** — Types AG-C, AGX-1, M-Glass, AGX-11.

**BEIJING NEW BUILDING MATERIALS PUBLIC LTD CO** — Type DBX-1

**CGC INC** — Type AR, C, IP-AR, IP-X1, IP-X2, IPC-AR, SCX, SHX, WRC or WRX

**CERTAINTED GYPSUM INC** — Types 1, FRPC, EGRG, GlasRoc, SilentFX, Type X, 5/8" Easi-Lite Type X.

**CERTAINTED GYPSUM CANADA INC** — Type C, Type X or Type Abuse-Resistant, 5/8" Easi-Lite Type X.

**GEORGIA-PACIFIC GYPSUM L L C** — Types 5, 6, 9, C, DAP, DD, DA, DAPC, DGG, DS, GPFS6, LS

**LAFARGE NORTH AMERICA INC** — Types LGFC2, LGFC2A, LGFC6, LGFC6A, LGFC-C, LGFC-C/A, LGFC-WD, LGLLX.

**NATIONAL GYPSUM CO** — Types FSK-C, FSW, FSW-5, FSW-6, FSW-C, FSW-G, FSL, SoundBreak XP Type X Gypsum Board

**PABCO BUILDING PRODUCTS L L C, DBA PABCO GYPSUM** — Types C, PG-3, PG-5, PG-9, PG-11, PG-C, PGS-WRS.

**PANEL REY S A** — Types GREX, PRX, RHX, MDX, ETX.

**SIAM GYPSUM INDUSTRY (SARABURI) CO LTD** — Type EX-1

**TEMPLE-INLAND** — Type TG-C, Type X, Veneer Plaster Base - Type X, Water Rated - Type X, Sheathing - Type X, Soffit - Type X, GreenGlass Type X, Type X ComfortGuard Sound Deadening Gypsum Board.

**THAI GYPSUM PRODUCTS PCL** — Type X

**UNITED STATES GYPSUM CO** — Type AR, C, IP-AR, IP-X1, IP-X2, IPC-AR, SCX, SHX, WRC, WRX, USGX

**USG MEXICO S A DE C V** — Type AR, C, IP-AR, IP-X1, IP-X2, IPC-AR, SCX, SHX, WRC or WRX

4A. **Gypsum Board\*** — (As an alternate to item 4) — Nom 3/4 in. thick, installed as described in Item 4 with 1-1/4 in. long Type S screws for inner layer and 2-1/4 in. long Type S screws for outer layer.

**CGC INC** — Types AR, IP-AR

**UNITED STATES GYPSUM CO** — Types AR, IP-AR

**USG MEXICO S A DE C V** — Types AR, IP-AR

4B. **Gypsum Board\*** — (As alternate to Item 4) - Horizontal Application - Base layer is attached to the studs, with 1 in. long Type-S bugle head screws, spaced 16 in. OC. The face layer attached to the studs with 1-5/8 in. long Type S bugle head screws spaced 16 in. OC. Horizontal joints need not be staggered on opposite faces or backed by steel framing. Face layer horizontal joints must be staggered a minimum 12 in. from the base layer when applied horizontally. Vertical application - base layer attached to the studs with 1 in. long Type-S bugle head screws, spaced 16 in. OC. The face layer attached to the studs with 1-5/8 in. long Type-S bugle head screws, spaced 16 in. OC. Vertical joints are centered over studs and staggered between layers and on opposite sides of the wall.

**CERTAINTED GYPSUM INC** — Type X, Type C.

**CERTAINTED GYPSUM CANADA INC** — Type X, Type C.

**THAI GYPSUM PRODUCTS PCL** — Type X, Type C.

**4C. Wall and Partition Facings and Accessories\*** — (As an alternate to Items 4 through 4C) — Nominal 5/8 in. thick, 4 ft wide panels, applied vertically and secured as described in Item 4.

**SERIOUS ENERGY INC** — Types QuietRock ES, QuietRock 527.

**4D. Gypsum Board\*** — (As an alternate to Item 4, not for use with Items 1B and 2B) - Nom. 5/8 in. thick gypsum panels with beveled, square or tapered edges installed as described in Item 4.

**CGC INC** — Type ULX

**UNITED STATES GYPSUM CO** — Type ULX

**USG MEXICO S A DE C V** — Type ULX

\*Bearing the UL Classification Mark

[Last Updated](#) on 2013-06-06

[Questions?](#)

[Print this page](#)

[Terms of Use](#)

[Page Top](#)

© 2013 UL LLC

When the UL Leaf Mark is on the product, or when the word "Environment" is included in the UL Mark, please search the [UL Environment database](#) for additional information regarding this product's certification.

The appearance of a company's name or product in this database does not in itself assure that products so identified have been manufactured under UL's Follow-Up Service. Only those products bearing the UL Mark should be considered to be Certified and covered under UL's Follow-Up Service. Always look for the Mark on the product.

UL permits the reproduction of the material contained in the Online Certification Directory subject to the following conditions: 1. The Guide Information, Assemblies, Constructions, Designs, Systems, and/or Certifications (files) must be presented in their entirety and in a non-misleading manner, without any manipulation of the data (or drawings). 2. The statement "Reprinted from the Online Certifications Directory with permission from UL" must appear adjacent to the extracted material. In addition, the reprinted material must include a copyright notice in the following format: "© 2013 UL LLC".