



Design No. V448

BXUV.V448

Fire Resistance Ratings - ANSI/UL 263

[Page Bottom](#)

Design/System/Construction/Assembly Usage Disclaimer

- Authorities Having Jurisdiction should be consulted in all cases as to the particular requirements covering the installation and use of UL Certified products, equipment, system, devices, and materials.
- Authorities Having Jurisdiction should be consulted before construction.
- Fire resistance assemblies and products are developed by the design submitter and have been investigated by UL for compliance with applicable requirements. The published information cannot always address every construction nuance encountered in the field.
- When field issues arise, it is recommended the first contact for assistance be the technical service staff provided by the product manufacturer noted for the design. Users of fire resistance assemblies are advised to consult the general Guide Information for each product category and each group of assemblies. The Guide Information includes specifics concerning alternate materials and alternate methods of construction.
- Only products which bear UL's Mark are considered Certified.

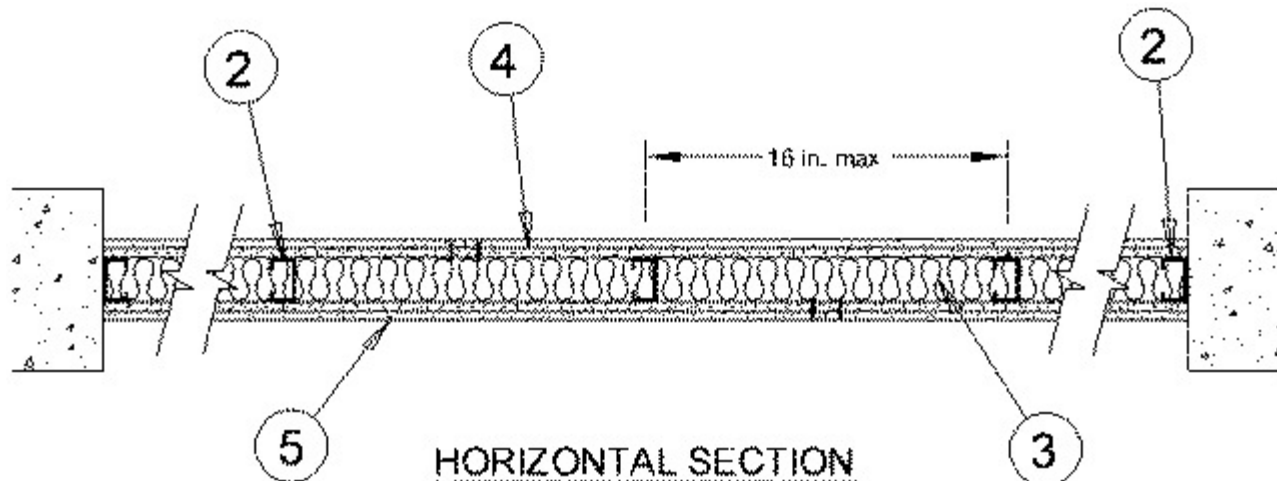
Fire-resistance Ratings - ANSI/UL 263

[See General Information for Fire-resistance Ratings - ANSI/UL 263](#)

Design No. V448

February 19, 2013

Nonbearing Wall Rating — 1 HR.



1. **Floor and Ceiling Runner** — (Not Shown) — Channel shaped, attached to floor and ceiling with steel fasteners spaced max 36 in. OC. Fabricated from min No. 25 MSG galv steel, min 3-5/8 in. deep and min 1-1/4 in. wide.

1A. **Framing Members* - Floor and Ceiling Runners** — Not shown - In lieu of Item 1 — For use with Item 2A, proprietary channel shaped runners, 1-1/4 in. deep by min 3-5/8 in. wide fabricated from min 0.020 in. thick galv steel, attached to floor and ceiling with fasteners spaced 36 in. OC max.

CALIFORNIA EXPANDED METAL PRODUCTS CO — Viper20™ Track

MARINO/WARE, DIV OF WARE INDUSTRIES INC — Viper20™ Track

PHILLIPS MFG CO L L C — Viper20™ Track

1B. Framing Members*— Floor and Ceiling Runners — (Not shown) — As an alternate to Item 1 - For use with Item 2B, channel shaped, min 3-5/8 in. wide fabricated from min 0.018 in. thick galv steel, attached to floor and ceiling with fasteners 36 in. OC. max.

CLARKDIETRICH BUILDING SYSTEMS — CD ProTRAK

DMFCWBS L L C — ProTRAK

MBA BUILDING SUPPLIES — ProTRAK

RAM SALES L L C — Ram ProTRAK

SOUTHEASTERN STUD & COMPONENTS INC — ProTRAK

STEEL STRUCTURAL SYSTEMS L L C — Tri-S ProTRAK

1C. Framing Members* - Floor and Ceiling Runners — Not shown - In lieu of Item 1 — For use with Item 2C, proprietary channel shaped runners, min 3-5/8 in. wide, attached to floor and ceiling with fasteners spaced 36 in. OC max.

CALIFORNIA EXPANDED METAL PRODUCTS CO — Viper25™Track

MARINO/WARE, DIV OF WARE INDUSTRIES INC — Viper25™Track

PHILLIPS MFG CO L L C — Viper25™ Track

1D. Framing Members* - Floor and Ceiling Runners — Not shown - In lieu of Item 1 — For use with Item 2D, proprietary channel shaped runners, 1-1/4 in. deep by min 3-5/8 in. wide fabricated from min 0.020 in. thick galv steel, attached to floor and ceiling with fasteners spaced 36 in. OC max.

TELLING INDUSTRIES L L C — Viper20™ Track

1E. Framing Members*— Floor and Ceiling Runners — (Not shown) — As an alternate to Item 1 - For use with Item 2E, channel shaped, min 3-5/8 in. wide fabricated from min 0.018 in. thick galv steel, attached to floor and ceiling with fasteners 36 in. OC. max.

TELLING INDUSTRIES L L C — TRUE-TRACK™

1F. Framing Members* - Floor and Ceiling Runners — Not shown - In lieu of Item 1 — For use with Item 2F, proprietary channel shaped runners, min 3-5/8 in. wide, attached to floor and ceiling with fasteners spaced 36 in. OC max.

TELLING INDUSTRIES L L C — ViperTrack™

2. Steel Studs — Channel shaped, spaced a max 16 in. OC. Fabricated from min 25 MSG galv steel, min 3-5/8 in. wide by 1-1/4 in. deep with 1/4 in. folded back return flange legs. Studs to be cut 3/8 in. less the assembly height. Steel studs friction-fitted into ceiling runners (Item 1). Studs attached to floor runners with 7/16 in. long Type S-12 pan-head, self-drilling, self-tapping steel screws on both sides of the studs or by welded or bolted connections designed in accordance with the AISI specifications. Where required for lateral support of

studs, support shall be provided by means of steel straps, channels or other similar means as specified in the design of a particular steel stud wall system.

2A. Framing Members* - Steel Studs — Not shown - In lieu of Item 2 — For use with Item 1A, proprietary channel shaped steel studs, 1-1/4 in. deep by min 3-5/8 in. wide fabricated from min 0.020 in. thick galv steel. Studs cut 3/8 in. less in length than assembly height. Spaced 16 in. OC max. Studs attached to floor runners with 7/16 in. long Type S-12 pan-head, self-drilling, self-tapping steel screws on both sides of the studs or by welded or bolted connections designed in accordance with the AISI specifications. Where required for lateral support of studs, support shall be provided by means of steel straps, channels or other similar means as specified in the design of a particular steel stud wall system.

CALIFORNIA EXPANDED METAL PRODUCTS CO — Viper20™

MARINO/WARE, DIV OF WARE INDUSTRIES INC — Viper20™

PHILLIPS MFG CO L L C — Viper20™

2B. Framing Members*— Steel Studs — As an alternate to Item 2 - For use with Item 1A, channel shaped studs, min 3-5/8 in. wide fabricated from min 0.018 in. thick galv steel, spaced a max of 16 in. OC. Studs to be cut 3/8 in. less than assembly height. Studs attached to floor runners with 7/16 in. long Type S-12 pan-head, self-drilling, self-tapping steel screws on both sides of the studs or by welded or bolted connections designed in accordance with the AISI specifications. Where required for lateral support of studs, support shall be provided by means of steel straps, channels or other similar means as specified in the design of a particular steel stud wall system.

CLARKDIETRICH BUILDING SYSTEMS — CD ProSTUD

DMFCWBS L L C — ProSTUD

MBA BUILDING SUPPLIES — ProSTUD

RAM SALES L L C — Ram ProSTUD

SOUTHEASTERN STUD & COMPONENTS INC — ProSTUD

STEEL STRUCTURAL SYSTEMS L L C — Tri-S ProSTUD

2C. Framing Members* - Steel Studs — As an alternate to Item 2 - For use with Item 1C, channel shaped studs, min 3-5/8 in. wide, spaced a max of 16 in. OC. Studs to be cut 3/8 in. less than assembly height. Studs attached to floor runners with 7/16 in. long Type S-12 pan-head, self-drilling, self-tapping steel screws on both sides of the studs or by welded or bolted connections designed in accordance with the AISI specifications. Where required for lateral support of studs, support shall be provided by means of steel straps, channels or other similar means as specified in the design of a particular steel stud wall system.

CALIFORNIA EXPANDED METAL PRODUCTS CO — Viper25™

MARINO/WARE, DIV OF WARE INDUSTRIES INC — Viper25™

PHILLIPS MFG CO L L C — Viper25™

2D. Framing Members* - Steel Studs — Not shown - In lieu of Item 2 — For use with Item 1D, proprietary channel shaped steel studs, 1-1/4 in. deep by min 3-5/8 in. wide fabricated from min 0.020 in. thick galv steel. Studs cut 3/8 in. less in length than assembly height. Spaced 16 in. OC max. Studs attached to floor runners with 7/16 in. long Type S-12 pan-head, self-drilling, self-tapping steel screws on both sides of the studs or by welded or bolted connections designed in accordance with the AISI specifications. Where required for lateral

support of studs, support shall be provided by means of steel straps, channels or other similar means as specified in the design of a particular steel stud wall system.

TELLING INDUSTRIES L L C — Viper20™

2E. Framing Members*— Steel Studs — As an alternate to Item 2 - For use with Item 1E, channel shaped studs, min 3-5/8 in. wide fabricated from min 0.018 in. thick galv steel, spaced a max of 16 in. OC. Studs to be cut 3/8 in. less than assembly height. Studs attached to floor runners with 7/16 in. long Type S-12 pan-head, self-drilling, self-tapping steel screws on both sides of the studs or by welded or bolted connections designed in accordance with the AISI specifications. Where required for lateral support of studs, support shall be provided by means of steel straps, channels or other similar means as specified in the design of a particular steel stud wall system.

TELLING INDUSTRIES L L C — TRUE-STUD™

2F. Framing Members* - Steel Studs — As an alternate to Item 2 - For use with Item 1F, channel shaped studs, min 3-5/8 in. wide, spaced a max of 16 in. OC. Studs to be cut 3/8 in. less than assembly height. Studs attached to floor runners with 7/16 in. long Type S-12 pan-head, self-drilling, self-tapping steel screws on both sides of the studs or by welded or bolted connections designed in accordance with the AISI specifications. Where required for lateral support of studs, support shall be provided by means of steel straps, channels or other similar means as specified in the design of a particular steel stud wall system.

TELLING INDUSTRIES L L C — Viper25™

3. Batts and Blankets* — Nom 3 in. thick, minimum 3.4 pcf mineral wool batts, friction fit between the studs and floor and ceiling runners.

See **Batts and Blankets** (BZJZ) category for names of manufacturers.

4. Mineral and Fiber Board* — Nom 1/2 in. thick, 4 ft wide Homasote Type 440-32 Sheathing. Installed with long dimension parallel with studs. Vertical joints centered on studs, and staggered one stud space from opposite side. Attached to studs with Type S-6 1-5/8 in. long steel screws, spaced 12 in. OC along interior studs at perimeter of panels.

HOMASOTE CO — Homasote Type 440-32

5. Gypsum Board* — 5/8 in. thick, 4 ft wide. One layer of gypsum board applied vertically over the mineral and fiber board with joints centered between studs and staggered min 16 in. on opposite sides, secured with Type S-10, 1-1/2 in. long steel screws spaced 12 in. OC along the perimeter and 16 in. OC in the field.

CGC INC — Types C, IP-X2.

UNITED STATES GYPSUM CO — Types C, IP-X2.

USG MEXICO S A DE C V — Types C, IP-X2.

6. Joint Tape and Compound — (Not Shown) — Outer layer joints covered with joint compound and paper or mesh tape. Screw heads covered with joint compound.

*Bearing the UL Classification Mark

[Last Updated](#) on 2013-02-19

[Questions?](#)

[Print this page](#)

[Terms of Use](#)

[Page Top](#)

© 2013 UL LLC

When the UL Leaf Mark is on the product, or when the word "Environment" is included in the UL Mark, please search the [UL Environment database](#) for additional information regarding this product's certification.

The appearance of a company's name or product in this database does not in itself assure that products so identified have been manufactured under UL's Follow-Up Service. Only those products bearing the UL Mark should be considered to be Certified and covered under UL's Follow-Up Service. Always look for the Mark on the product.

UL permits the reproduction of the material contained in the Online Certification Directory subject to the following conditions: 1. The Guide Information, Assemblies, Constructions, Designs, Systems, and/or Certifications (files) must be presented in their entirety and in a non-misleading manner, without any manipulation of the data (or drawings). 2. The statement "Reprinted from the Online Certifications Directory with permission from UL" must appear adjacent to the extracted material. In addition, the reprinted material must include a copyright notice in the following format: "© 2013 UL LLC".